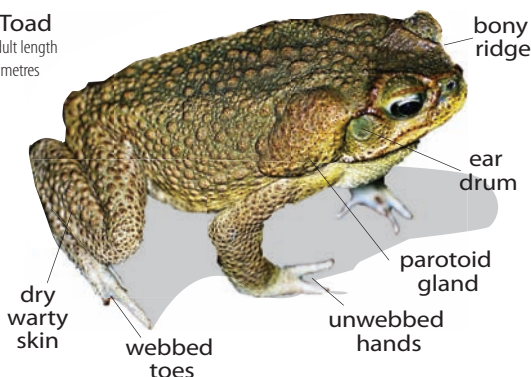


# FROG OR TOAD?

Many people have difficulty in telling native frogs and Cane Toads apart, because they share similar features such as warty skin, a visible ear drum or webbed toes. Unlike native frogs, adult Cane Toads have all of the features labelled below:

## Cane Toad

Average adult length is 150 millimetres



Frogs commonly mistaken as Cane Toads in New South Wales:



Bleating Tree Frog  
*Litoria dentata*



Peron's Tree Frog  
*Litoria peronii*



Scarlet Sided Pobblebonk  
*Limnodynastes terraereginae*



Common Froglet  
*Crinia signifera*



Ornate Burrowing Frog  
*Opisthodon ornatus*



Spotted Marsh Frog  
*Limnodynastes tasmanensis*

To find out more go to [www.nationalparks.nsw.gov.au](http://www.nationalparks.nsw.gov.au)

Department of Environment & Climate Change NSW



Cane Toad spawn



Cane Toad tadpoles



Young adult Cane Toad

Cane Toads are a serious threat to the unique native wildlife in New South Wales because:

1. Cane Toads invade the habitats of native frogs and eat their food. They have a huge appetite, and even eat small lizards and frogs
2. Cane Toads poison other animals who try to eat them, including quolls, goannas, kookaburras, herons and domestic pets
3. Native frogs are killed when mistaken for Cane Toads.

## What you can do to make your home Cane Toad free



### Remove toad temptations

1. Cover or bring in pet food in at night, as it attracts Cane Toads.
2. Remove standing water. Toads need access to water every two days to rehydrate.
3. Remove rubbish and other debris where Cane Toads will find shelter during the day.
4. Keep your outside lights off when not needed. Cane toads like night time lighting because it attracts moths and other insects for them to feast on.



### Keep toads out

Toads are not good at climbing or hopping. Use a barrier made of a smooth solid material, at least fifty centimetres high and secured into the ground.



### Dispose of toads thoughtfully

Even freshly killed toads can poison animals. Place them in your covered compost or garbage bin. Composted toads make great fertiliser.

Male Cane Toads usually call on hot humid summer nights. For more information and to listen to a male Cane Toad call go to:

[www.nationalparks.nsw.gov.au](http://www.nationalparks.nsw.gov.au)  
<http://www.amonline.net.au>  
<http://www.frogwatch.org.au>

If you discover Cane Toads in your local area for the first time, please report it to your National Parks and Wildlife Office.