



# Foundation for National Parks & Wildlife

## Year in Review 2013



*Caring for Australia's natural and cultural heritage since 1970*



# Contents

President’s Address..... 1

2013 - A Year of Events..... 2-3

2013 Projects Table ..... 4

Parks for People..... 5

Growing Parks & Reserves..... 6-7

Habitat Conservation & Wildlife Corridors..... 8-9

Saving Threatened Species .....10-13

Environmental Education .....14-15

Preserving & Celebrating Cultural Heritage.....16

Working in Partnership .....17

Supporters .....18

Members.....19

Board of Directors..... 20-21

Committees ..... 22

Staff ..... 23

Organisation..... 23

Ambassadors ..... 24

Financial Summary ..... 25

Photo front cover: Old growth Scribbly Gum in Heritage Estates. Photo: Chris Grounds.

# About the Foundation

## OUR MISSION

The Foundation for National Parks & Wildlife aims to protect Australia’s natural and cultural heritage.

The Foundation for National Parks & Wildlife was established in 1970 by the then Lands Minister of New South Wales, the Honourable Thomas Lancelot Lewis AO, who later become the state’s Premier.

The Foundation was set up to act as the wholly independent fundraising arm of the state’s newly created National Parks & Wildlife Service. During this period the Foundation’s scope was New South Wales-wide.

In 2000, the Foundation’s members voted to amend its constitution so that the organisation could expand its work Australia-wide.

The Foundation is an apolitical organisation which acts as a fundraiser and a grant maker. It partners with people from not-for-profits, government, business, and the community to work toward the achievement of its mission.

## The Foundation for National Parks & Wildlife:

- acquires high conservation value land for Australia’s national parks and other permanently protected areas;
- funds conservation projects for threatened species, habitats, and cultural heritage sites; and
- engages the community through environmental education.



## FOUNDATION ACHIEVEMENTS

In its history, the Foundation for National Parks & Wildlife has:

- added over 500,000 hectares of high conservation value land to Australia’s National Reserve System – including land for many national parks in New South Wales, and the Daintree National Park within Wet Tropics World Heritage Area in Queensland.
- funded conservation projects to benefit over 70 of Australia’s threatened plant and animal species – including the Koala, many kinds of rock-wallabies, Corroboree Frog, Southern Cassowary, and many more.
- provided hundreds of grants to private landowners, not-for-profit organisations, Friends of National Parks, and community groups to undertake weeding, tree planting, wildlife corridor establishment, and habitat restoration.
- funded the conservation and celebration of almost 30 cultural heritage sites and stories, including Captain Cook’s Landing Place in Kamay Botany Bay National Park, Fort Denison in Sydney Harbour National Park, and archeological research into the human remains of Mungo Man (believed to be over 40,000 years old) at Mungo National Park, and many others.
- annually engaged over 30,000 Australians with high-quality, free, environmental education materials, through the Backyard Buddies program, which encourages urban and suburban dwellers to turn their backyards into safe and thriving habitats for native animals and plants.

The Foundation for National Parks & Wildlife thanks our many supporters over the years, who are our partners in conservation. Without their support, none of this would have been possible.

# President’s Address



2013 was a year of change for the Foundation. When Peter Janssen (Board member since 1999 and its President since 2005) retired, I was incredibly humbled to be elected as Foundation President.

Peter left big shoes to fill, however I assured him and all of our members and supporters that it is my great privilege and honour to lend a safe pair of hands to guide the strategic direction of the Foundation into the future.

This organisation was 43 years old in 2013, and I look forward to stewarding its continued success.

Thank you to Peter for his eight years of leadership, for carefully overseeing the strategic direction of the Foundation and for creating a more outward looking organisation. During his time with the Foundation, Peter chaired and participated as a member of the Foundation’s committees. Peter took an active leadership role, attending and representing the Foundation at many events, project openings and partner meetings.

I also wish to thank Peter Henchman who retired from the Foundation’s Board after contributing almost 30 years of service to the organisation. Peter became a governor of the organisation, and member of its Board in 1984. He chaired the Foundation’s Projects Committee from 1984 up until 2010. Under his chairmanship of the Projects Committee, it is estimated that the Foundation granted approximately \$16 million to over 500 Australian conservation projects. As a result of this impressive achievement, the Foundation’s capacity as a grant maker was recognised by all levels of government, not-for-profit organisations, family foundations, and many other groups.

Thank you Angus M Robinson who retired from the Foundation’s Board after contributing six years of service to the organisation. Angus served as Chair and member of a number of the Foundation’s committees, and contributed his time and knowledge generously for the benefit of the organisation. Through his ecotourism company Leisure Solutions®, Angus also directly supported a number of the Foundation’s conservation projects.

On behalf of the Foundation, I wish all of our retiring Directors all the best in the future, and see it as a mark of great respect for the organisation that they all remain governors.

I welcome our newest Board member, Mary-Louise Williams AM, and look forward to working with her.

2013 saw the Foundation for National Parks & Wildlife continue to work in line with its mission of protecting Australia’s natural and cultural heritage.

One of the Foundation’s largest projects of the year was the continued delivery of the Voluntary Heritage Estates Land Project. This project is being undertaken with the support of all levels of government. During the year, the Foundation acquired over 500 from the 1,200 lots that make up the paper subdivision of Heritage Estates. This area, on the New South Wales coast near Jervis Bay, contains a number of threatened species and important habitats and preserves a wildlife corridor between Jervis Bay National Park and the federally managed Booderee National Park. As part of Jervis Bay National Park, the land will be managed for conservation in perpetuity, for the preservation of its threatened species and the enjoyment of all.

The Foundation gratefully received another parcel of land for protection in the National Reserve System in 2013, from Stephen and Yuana Hesketh. The Foundation thanks the Heskeths for their generosity and foresight as fantastic stewards of their piece of Australia. May it long remain a place of beauty and thriving life.

The Foundation also developed new partnerships in 2013 for the benefit of Australia’s environment. It partnered with the Great Eastern Ranges Initiative, which aims to safeguard a wildlife corridor across four states of Australia’s eastern seaboard, to deliver the inaugural Great Eastern Ranges Grant program.

Through the Great Eastern Ranges grants, which the Foundation administered, approximately \$400,000 was injected into conservation projects in New South Wales to improve the resilience of this crucial stretch of land. Wildlife corridors are of increasing importance, particularly in the face of climate change, so that wildlife and plant species can move to new areas as the conditions of their habitats alter.

We know that our native species cannot be preserved in national parks alone. Much of the land in Australia is privately owned, and what happens on those properties affects Australia’s species. That is why the Foundation has for many years supported conservation on private properties by individual landowners and groups. Since 2008, the Foundation has granted over \$1 million to landowners undertaking conservation works through its New South Wales-focused Private Land Conservation Grants program.

During 2013, the Foundation laid the ground work to expand this program’s availability to Victorian private landowners. I am proud to announce that the Foundation for National Parks & Wildlife has partnered with the Victorian Trust for Nature, which registers conservation covenants in Victoria. 2014 will be the first year that Private Land Conservation Grants will be available in Victoria, to landowners with covenants registered under the Trust for Nature program.

I am incredibly proud of what the Foundation has achieved in 2013. A quick summary:

- \$33,000 was spent on conserving and celebrating the sites and stories of Australia’s cultural heritage.
- Almost \$100,000 was spent on improving national parks and making them more accessible, enjoyable places to visit.
- Just under \$120,000 was spent on providing environmental education programs, to engage Australians as passionate stakeholders in conservation.
- Over \$200,000 was awarded to 18 conservation projects for threatened animals and plant species right across Australia.
- Over \$3.3 million was spent on land and water conservation projects, including land purchases for national parks.

In 2014 we will be actively pursuing a number of new initiatives which we will share in due course, however one aspect is clear—we will be working hard to expand our revenue base so we can continue to improve the environment in which we live.

I thank all of our supporters for making such achievements possible, and I look forward to a successful 2014.

*Garry Browne*

Mr Garry Browne AM,  
President



# 2013 - A Year of Events



Clockwise from top left: 1) CEO Susanna Bradshaw planting natives at the Peats Ridge Festival. 2) The Foundation's Garage Sale. 3) Sydney Skinny swimmers. Photo: Stephen Coulter. 4) The Foundation's concert at Middle Head. 5) The Mountain Pygmy-possum project on Lateline. Photo: ABC.

**In 2013, the Foundation for National Parks & Wildlife featured in and ran a number of events, to raise funds, awareness of the cause, and awareness of the organisation. As the Foundation doesn't typically pay for advertisements, this is one of the main ways that the organisation gets its name out there.**

The Foundation for National Parks & Wildlife started off 2013 with a bang. It brought in the New Year at the Eco-Living Village of the Peats Ridge Sustainable Arts and Music Festival, as the event's charity partner. Foundation Ambassadors Mr Jake Cassar and Mr Ian Mortimer supported the Foundation at this event.



Peats Ridge Festival-goers enjoying the Talking Tree display at the Foundation's stall in the Eco-Living Village.

In February, the Foundation was the charity partner of the world's first skinny-dip swim event, Sydney Skinny. This fantastic day was held at Cobblers Beach in the Sydney Harbour National Park. The event was kindly sponsored by nudie™ and Ella Baché, who donated \$7,500 to the Foundation. Participants in the event could also choose to fundraise for us. Sydney Skinny swimmers Paul Martin, Kath Anderson, and Sara Garcia together raised over \$2,200 for the Foundation.



Swimmers swam 900 m bare for the cheeky Sydney Skinny event at Cobblers Beach, and could choose to fundraise for the Foundation.

In March, a project, which the Foundation has been championing for many years, received some excellent media coverage on ABC's Lateline program. The Foundation partnered with the Paddy Pallin Foundation, Paddy Pallin stores, Australian Geographic Society and Australian Geographic stores to fundraise for a new captive breeding program for the Mountain Pygmy-possum—Australia's only hibernating alpine marsupial. This project has the support of the New South Wales National Parks and Wildlife Service, the University of New South Wales, the University of New England, Australian Ecosystems Foundation, and others, who are driving its development.



The Mountain Pygmy-possum captive breeding program, which the Foundation is fundraising for, was featured on ABC's 'Lateline'.



Concert pianist Ms Ambre Hammond performing at the Foundation's first Concert in the Park in the gun battlements of Middle Head.

The end of March saw the Foundation hold its very first 'Concert in the Park'. The Foundation created this event to get people out into their national parks for a unique and magical experience. Foundation Ambassador Ms Ambre Hammond, an internationally acclaimed concert pianist, dazzled the audience of Foundation friends and supporters. She played a grand piano lowered into the heritage gun battlements of Middle Head, under a resplendent full moon dancing over the waters and bays of Sydney Harbour. 1927's Mr Simon Shapiro also played an acoustic set, which was loved by all. Many groups came together to make this event a great success, including the New South Wales National Parks & Wildlife Service, Valiant Hire Furniture, Theme & Variations Piano Services, Belinda Franks Catering, Auswide Productions, and Australian Promo Company.



The riders from Keller Australia providing the Foundation's CEO Ms Susanna Bradshaw with a cheque for the amount they fundraised.

In August, six riders from the Keller Australia Group of Companies set off on an 11-day motorbike challenge to ride across Australia. As part of the 2013 Coast 2 Coast Charity Challenge, the Keller team raised funds for a number of charities including \$10,630 for the Foundation.

In September, thanks to the support of Foundation Ambassador Ms Barbara Buttery, AMP Capital and Macquarie Centre, the Foundation's Backyard Buddies environmental education program was showcased at Sydney's Macquarie Centre for the weekend. Tips about how to encourage native animals in your backyard were given, a wildlife display show was held by Australian Wildlife Displays, Foundation Ambassador Mr Ian Mortimer put on a performance and puppet show to tell the kids some environmentally-themed stories, and awareness was raised about the Foundation's role in conserving Australia's threatened species.



Foundation CEO Ms Susanna Bradshaw running a stall at the Q Station family fun day and promoting the work of the organisation.

In September, the Foundation was also showcased at a family fun day at Q Station—the former Quarantine Station in Manly, New South Wales. The Foundation's CEO Ms Susanna Bradshaw attended and ran a stall, promoted the Foundation and its works, and spread the message to many attendees.

In October, the Foundation held a garage sale at Middle Head near Mosman in New South Wales, as part of the third annual Garage Sale Trail. The Foundation encouraged recycling, upcycling, and reuse rather than sending old items to landfill. Foundation directors donated items to sell at the event, and funds raised went to the Foundation for conservation works. Foundation's ambassadors, including bush tucker expert Mr Jake Cassar, entertained the crowds.



The Foundation's CEO Ms Susanna Bradshaw chatting with visitors to the Foundation's garage sale, part of the Garage Sale Trail, at Middle Head.

Foundation Ambassador Ms Eminè Mehmet, a sustainability promotor, promoted the Foundation at the Sustainable Design Principles Event. The Foundation's Fundraising and Development Manager Ms Emma Lipscombe also manned a stall at this event to raise awareness about the Foundation.



Foundation Ambassador Ms Julie Paterson of ClothFabric™ created a new line of fabric for sale, based on the Wollemi Pine, the proceeds of which would go the Foundation to support its work. Following the bushfires that devastated the Blue Mountains in 2013, Ms Paterson also designed a Bushfire Tea Towel Series, the proceeds of which would go to the Foundation to support wildlife carer groups in the Blue Mountains area, such as WIRES.



2013 PROJECTS	APPROVED	PAID
Land and Water Conservation		
Private Land Conservation Grants Program 2011-2013 (NSW)	\$34,666	\$294,951
Conservation Partners Monitoring & Support Program (NSW)		\$1,123
Voluntary Heritage Estates Land Project (NSW)	\$143,218	\$2,614,230
Goat Island Rescue (NSW)		\$4,800
Great Eastern Ranges Grants (NSW)	\$400,000	\$389,152
Yuana and Stephen Hesketh Land Donation (NSW)	\$80,000	
Be Natural Tree Pledge Campaign (NSW)	\$2,000	
Ridge to River – Restoring Riparian Habitat in Lane Cove National Park (NSW)	\$1,000	\$12,000
Furneaux Islands Boxthorn Control by the Friends of Bass Strait Islands-Wildcare (TAS)	\$13,160	\$13,160
Koala Action Group Bushcare Plantings (QLD)	\$10,582	\$10,582
Daintree Buy Back and Protect Forever project by Rainforest Rescue (QLD)	\$14,000	\$14,000
Native Plant & Animal Conservation		
Threatened Flora Surveys Harbour South (NSW)		\$23,303
Enhancing Recovery of Black-eared Miners at Calpernum Station (SA)		\$7,190
Monitoring of the Little Penguin population at Manly (NSW)		\$18,224
Endangered Stuttering Frog (NSW)		\$24,000
Little Penguin Story (NSW)		\$5,000
Recovery of Eastern Bristlebird (NSW)		\$22,582
National Malleefowl Recovery Coordinator Position (SA, VIC, NSW, WA)	\$15,000	\$5,000
Redland Koala Treeplanting (QLD)	\$6,000	\$6,000
Great Koala Count App (NSW)	\$5,000	\$5,000
Is Port Macquarie a Koala Genetic Hotspot (NSW)	\$15,220	\$15,220
Safeguarding Australia’s Threatened Flora (NSW, QLD)	\$14,970	\$14,970
Green Parrot Assisted Breeding Project (NORFOLK ISLAND)	\$13,290	\$13,290
Saving Sydney’s Last White-fronted Chats (NSW)	\$12,323	\$12,323
Stress and Disease in the Decline of the Endangered Woylies (WA)	\$7,200	\$7,000
Monitoring, Evaluating and Reporting on the Little Penguin (WA)	\$7,000	\$7,000
Monitoring Little Penguin mortalities in Gulf St Vincent (SA)	\$13,341	\$13,341
Paddy Pallin Science Grant (Marine) - Seasnakes (WA)	\$7,000	
Paddy Pallin Science Grant (Marine) - Sea Cucumbers (QLD)	\$7,000	
Parks for People		
Nunock Swamp Interpretations (NSW)		\$3,405
Ten Mile Hollow Bridge (NSW)		\$5,348
Directional Signs for the Old Great North Road (NSW)		\$6,500
Corporate Volunteering Sydney Harbour (NSW)	\$14,559	\$83,002
Cultural Heritage Conservation		
Kiandra Historic Heritage Tourism Project (NSW)		\$18,900
The Waddy Tree - Connecting Communities Across Ages and Cultures (QLD)	\$14,100	\$14,100
Environmental Education		
Backyard Buddies Environmental Education and Awareness Raising Program (AUSTRALIA-WIDE)	\$88,022	\$88,022
Caught on Camera (VIC)	\$13,200	\$13,200
Jenolan Caves: The Science (NSW)	\$10,000	\$10,000
Community Environment Network’s Land for Wildlife Biennial Forum (NSW)	\$5,000	\$5,000
Education in Nature (AUSTRALIA-WIDE)	\$13,300	\$3,300
Total	\$980,151	\$3,804,218

# Parks for People



Clockwise from top left: 1) At the Cecil Hoskins Nature Reserve upgrades launch. Photo: Joel Ibbetson. 2) Corporate volunteers from Jemena. 3) Teams learning the basics at a corporate volunteer day at Lane Cove National Park. Corporate volunteer photos courtesy of Landcare Australia.

## CORPORATE VOLUNTEERING, NSW

**In 2013, the Foundation for National Park & Wildlife, Landcare Australia, and the New South Wales National Parks & Wildlife Service continued to deliver a Corporate Volunteering Program with a difference. Groups enjoy a fantastic day in the great outdoors, and the proceeds return to the Foundation to reinvest in national parks.**

Teams from many companies such as Konica Minolta, Telstra, Westpac, Jemena, Deutsche Bank descended upon weed infested areas of national parks around Sydney right across the year.

Corporate volunteering teams work together in the fresh air, learn to identify, remove and dispose of weeds, and revegetate areas with local native plants.

Each volunteer comes away from the day with a better understanding of biodiversity and how they can make a huge, direct impact on the environment.

The Foundation thanks Ranger Mel Tyas from Sydney Harbour National Park for hosting many of these enjoyable days, and Odessa O’Brien from Landcare Australia for coordinating the program to bring together community groups, corporate partners, and government agencies for the benefit of our environment.



Corporate volunteers from Telstra and Konica Minolta weeding in Ku-ring-gai Chase National Park.

## IMPROVING CECIL HOSKINS RESERVE, NSW

**In 2013, a range of new visitor facilities were opened to the public at Cecil Hoskins Nature Reserve in Moss Vale, in the New South Wales Southern Highlands. The Foundation’s CEO Ms Susanna Bradshaw attended the community celebrations.**

These works were able to be undertaken thanks to a member of the Hoskins family. In 2011, the Foundation was left a \$30,000 bequest by the late Mr Kenneth Charles Hoskins, for the benefit of the Cecil Hoskins Nature Reserve.

Kenneth’s father Sir Cecil Hoskins, after whom the reserve is named, was a local resident of the area who contributed to the purchase of land for the reserve through the Foundation for National Parks & Wildlife. The reserve contains a unique wetland, which offers an important sanctuary for over 90 different species of birds and some very rare vegetation.

Thanks to Kenneth’s contribution, and funding from the Wingecarribee Council and the Hawkesbury-Nepean Catchment Management Authority, the reserve has some new facilities. These include an upgraded walking track, tree plantings, indigenous interpretive signs, a bush tucker garden, and a bird viewing platform with a retaining wall, seating, and informative signs.



Ralph Hoskins (right), son of Kenneth Hoskins, attended the day along with Councillor Graham McLaughlin. Photo: Southern Highlands News.



# Growing Parks & Reserves



Clockwise from top left: 1) A White-cheeked Honeyeater spotted at Heritage Estates. Photo: Chris Grounds. 2) Cow Bay with the Daintree Rainforest in the background. Photo: Ben & Rebecca McIntyre. 3) Grey-headed Flying-foxes in the Booderee Botanic Gardens. Photo: Chris Grounds.

## BLUE MOUNTAINS LAND DONATION, NSW

In 2013 Stephen and Yuana Hesketh very generously donated their property in the Blue Mountains to the Foundation for National Parks & Wildlife.

The Foundation facilitated the incorporation of this land into the Blue Mountains National Park. The New South Wales National Parks & Wildlife Service agreed that the land had excellent conservation values worth preserving.

The Hesketh's property is located close to the ghost town of Yerranderie, which the Foundation assisted to become a Regional Park in 2011.

Over the years Yuana and Stephen enjoyed spotting the many wombats, kangaroos, dingoes, frogs, snakes, wildflowers, and many other important species on the land.

This significant gift of over 80 hectares of beautiful bushland was valued at \$80,000. The Foundation is incredibly grateful for the Hesketh's generosity and forward thinking, and we know that future generations will be grateful, too. Thank you Yuana and Stephen for being excellent stewards of your land.



Yuana and Stephen Hesketh donated their land to the Foundation for conservation in the reserve system. Photo courtesy of the Heskeths.

## VOLUNTARY HERITAGE ESTATES LAND PROJECT, NSW

In 2013, the Foundation for National Parks & Wildlife continued the Voluntary Heritage Estates Land Project.

In partnership with all levels of government, and with funding of over \$5.4 million from the Australian Government's Caring for Our Country program, the Foundation continued to purchase lots in Heritage Estates. Located on the south coast of New South Wales, Heritage Estates is a 'paper' subdivision of 180 hectares made up of approximately 1,200 lots.

By the end of 2013, the Foundation had over 500 Heritage Estates lots offered to it for sale. The purchased lots are being added to Jervis Bay National Park, and will be managed in perpetuity for conservation.

The land that makes up Heritage Estates acts as a natural wildlife corridor between Booderee National Park and Jervis Bay National Park. It contains significant communities of threatened species, including endangered Eastern Bristlebirds, and vulnerable Yellow Bellied Gliders, Leafless Tongue-orchids, Giant Burrowing Frogs, and Eastern Ground Parrots.



Blackbutt and Turpentine forest in Heritage Estates. Photo: Local resident Chris Grounds.

## DAINTREE LAND PURCHASE, QLD



The Daintree provides important habitat for amazing species like the Southern Cassowaries. Photo: Michelle Bender.

In previous years, the Foundation for National Parks & Wildlife supported work by Rainforest Rescue to revegetate Southern Cassowary habitats devastated by Cyclone Yasi. In 2013, the Foundation pledged a further \$19,000 in total to Rainforest Rescue, to support their efforts to purchase land in far north Queensland's Daintree Rainforest. The Foundation thanks Action Campaign for Endangered Species for providing funds for this purpose.

When the sale goes through in 2014, it will be the first time that the Foundation has been involved in a land acquisition outside of New South Wales—and hopefully the first of many to come. This land will be protected, and managed for the conservation of the many incredible species that rely on the Daintree Rainforest.

The developable property became available when a family decided not to build on the land they had purchased at Cow Bay, due to discovering a nesting cassowary pair. They offered to sell it to Rainforest Rescue at a rate that would only recover their costs.

The property is one of 1,100 freehold lots in a contentiously zoned development area. With only 1,000 Southern Cassowaries left in the wild, every opportunity to help conserve their habitat and their numbers is of great importance.

This property will help keep the balance between developed land and the natural habitat corridor known as the Baralba Corridor Nature Reserve.

## Donating Land to the Foundation for National Parks & Wildlife



Jason and Christine Brown, who donated their land in 2012. If you own a high conservation value property, you can take steps to see it protect forever.

- Step 1. Consider whether you want to donate the property and receive tax benefits, or manage the property yourself under a conservation agreement.
- Step 2. If you would like to donate a high conservation value property, contact the Foundation on (02) 9221 1949. The Foundation only accepts land donations that can be protected in perpetuity and managed for conservation.
- Step 3. The Foundation negotiates on your behalf with the relevant government body to see if your property is eligible for in perpetuity protection.
- Step 4. Your property is valued by the Australian Valuation Office (AVO) and you are made aware of your tax incentives for donation.
- Step 5. Your property is transferred to the Foundation. Stamp duty is typically exempt from this transaction.
- Step 6. The Foundation transfers your property to the National Reserve System by gaining approval from the relevant Minister or signing authority.
- Step 7. Your property is gazetted as an in perpetuity protected area, and part of our National Reserve System for all to enjoy!
- Step 8. We say thank you! Celebrations can take place on your property, if desired. The Foundation celebrates your contribution to biodiversity conservation through publicity in our communications.

## Protecting Your Land Forever

If you own a property that is home to many native species, and which you would like to see protected beyond your lifetime, there are a few options you may wish to consider.

You can place a voluntary conservation agreement on your property, so that current and future owners of your land will be restricted in what they are allowed to do to the land, and will also be obligated to manage the property for conservation purposes.

Alternatively, you may wish to donate the land to the Foundation for National Parks & Wildlife.

Unlike other not-for-profit organisations, the Foundation does not hold land to manage for conservation. The Foundation instead seeks a partner to manage each property for conservation in perpetuity, so that regardless of what happens to the Foundation in the future, your land will continue to be protected. The Foundation often finds in perpetuity land management partners in state national park agencies, or local councils who can permanently change zoning over land.

The Foundation is the only organisation in Australia whose philanthropy is an investment in our public estate, for all to enjoy.

As well contributing directly to the conservation of nature in Australia, land donors often enjoy significant tax benefits in regard to their donation of property to the Foundation for National Parks & Wildlife, which is endorsed as a Deductible Gift Recipient (DGR) covered by items 1 and 4 of the table in section 30-15 of the Income Tax Assessment Act 1997.



# Habitat Conservation & Wildlife Corridors



Clockwise from top left: 1 & 2) Educational field day held by grant recipients Araucaria Community of Broken Head. Photos: Holly North. 3) Grant recipient Steve with a quoll on his land. Photo Steve Haslam. 4) African Boxthorn. Photo: John Sullivan. 5) Pacific gull. Photo: Arthur Chapman.

## PRIVATE LAND CONSERVATION, NSW

In 2013, the Foundation received 102 applications for funding on private land. Based on the available funding, property eligibility and adherence to the grant guidelines, 54 applications were successful.

The Foundation administers these grants, and co-funds them alongside the New South Wales Environmental Trust, Paddy Pallin Foundation, Diversicon Environmental Foundation, Humane Society International's Wildlife Land Trust, Nature Conservation Trust of New South Wales. The Community Environment Network, the Office of Environment and Heritage's Conservation Partner's Program, and the New South Wales Catchment Management Authorities are also partners of the program.

These grants support private landowners in New South Wales undertaking conservation works on their own properties. As most of the land in Australia is under private ownership, landowners must be involved in conservation efforts. Our native species cannot survive in national parks alone.

The Foundation thanks the grant partners and the landowners actively engaging in conservation projects for their excellent work.



Warwick Deacock's property Chakola received a 2012 PLCG Grant. Camille and Nina helped plant and water. Photo: Michael Delmenico.

## GREAT EASTERN RANGES GRANTS, NSW

2013 saw the Foundation for National Parks & Wildlife partner with the Great Eastern Ranges Initiative to offer the inaugural Great Eastern Ranges Grant Program. Greening Australia awarded funding for this program with the support of the New South Wales Environmental Trust.

At over 3,600 km long and connecting far-north Queensland with western Victoria, the Great Eastern Ranges is Australia's longest north-south mountainous landscape. This corridor is rich in native plants and animals, and contains catchments that provide clean water to over 90% of the population of eastern Australia.

The Foundation administered these grants in partnership with the Great Eastern Ranges Initiative, and applications were assessed by an independent panel. Great Eastern Ranges partners were eligible to apply for a grant. Funded projects contribute to the continued success of the Great Eastern Ranges corridor. Kosciuszko to Coast, Community Environment Network, Birdlife Australia, Jaliigirr Biodiversity Alliance, the National Parks Association of New South Wales, Jali Local Aboriginal Land Council, and Slopes to Summit received grants.



A Squirrel Glider released during the Slopes to Summit (S2S) BioBlitz. S2S was one of seven organisations awarded a GER Grant. Photo: Esther Beaton.

## WEEDING FURNEAUX ISLANDS, TAS



Cape Barron Geese on Goose Island will benefit from weed removal by FoBSI-Wildcare and volunteers. Photo: Kristina D.C. Hoepfner.

In 2013, the Foundation provided \$14,476 to the Friends of Bass Strait Island-Wildcare (FoBSI-Wildcare). This grant will allow for the removal of invasive plant species such as African Boxthorn, from Tasmania's Furneaux Islands.

African Boxthorn is a highly invasive woody weed with long sharp thorns. It alters the suitability of island habitats for native plants and animals.

Teams mostly comprised of volunteers will carry out working bees over 10-day-periods. Weeding will take place on Goose and Roydon Islands, and will benefit the habitats of Cape Barron Geese, Muttonbirds, Little Penguins, and the vulnerable Pacific Gull.

## RESTORING RIDGE TO RIVER, NSW



Lane Cove National Park is home to some stunning scenery and animals, particularly in its riparian areas. Photo: David Lochlin.

In September 2013 the Foundation funded a project in the Lane Cove National Park in Sydney. It aims to restore the riparian habitat leading down to Carters Creek.

Small-leaf Privet is the major weed infestation in the area. A team of six will be working to reduce the weed over a two year period. There is also a local Bushcare team that will help to maintain the area.

Carters Creek is a significant bushland area which is visited by animals such as wallabies, echidnas, bandicoots, and small nesting birds. The threatened Powerful Owl has also been recorded in the area, and therefore it is important to continue to maintain this section of Lane Cove National Park.

## KOALA FOOD TREE PLANTINGS, QLD



More Koala food trees means more Koalas in the Redland Shire of Queensland. Photo: Chewy Chua.

In 2013, thanks to the support of Mitsubishi Australia, the Foundation continued to support the Koala Action Bushcare Group to undertake Koala food tree and other native tree plantings in the Redland Shire of Queensland.

These new plantings will help develop wildlife corridors to link up previously separated areas. Indigenous natives were planted including Koala food trees. In total, there were 2,100 plantings and there was a 50% increase in community participation compared with the same program the year before. This project raised community awareness of Koalas living in the local area, the importance of conserving them, and the need to maintain good habitat for them.

## MIDDLE HEAD RESCUE, NSW



The BNP Paribas team at the Middle Head Rescue Corporate Volunteer Challenge Day. Photo courtesy of Landcare Australia.

Middle Head Rescue, held in May 2013, was a Corporate Volunteer Challenge Day at the beautiful Middle Head precinct of Sydney Harbour National Park.

Corporate volunteering teams from Qantas, Westpac, Staples, Fujitsu, Telstra, BNP Paribas, Deutsche Bank, Grant Thornton, and event sponsor Konica Minolta participated, competed, and restored degraded habitats on the day.

Under the direction of National Parks & Wildlife Service rangers, volunteer teams removed invasive weeds, and planted local native plants in the park. In the past, volunteer teams have also helped restore cultural heritage sites such as the centuries-old ex-military gun battlements and defence tunnels at Middle Head.



# Saving Threatened Species



Clockwise from top left: 1) Norfolk Island Green Parrot. Photo: Abi Smith. 2) Green Carpenter Bee. Photo: Susanna Bradshaw. 3) Little Penguin monitoring, WA. Photo: Erin Biggs. 4) Brush-tailed Rock-wallabies. Photo: Melinda Norton. 5) The vulnerable Neat Wattle, SA. Photo: Brent Miller.

## COORDINATING CONSERVATION FOR THE MALLEEFOWL ACROSS AUSTRALIA

From January 2013 to December 2015 the Foundation is supporting a new position to oversee conservation strategies for the Malleefowl across state and territory boundaries.

The Foundation granted \$15,000 to help fund the appointment of the new National Malleefowl Recovery Coordinator, Tim Burnard. Tim Burnard will be bringing together different conservation strategies from across New South Wales, Victoria, South Australia and the Australian Capital Territory.

The Malleefowl is a very timid, ground-dwelling bird that prefers arid habitats. It builds large mounds to incubate its eggs and has feathers which help it blend into its surrounds.

Various teams currently operate in the states and territories where Malleefowl occur but there hasn't been a national coordinated approach until now.

The new position opened up will aim to maximise the long term survival of this threatened bird species and down grade their status from vulnerable to conservation dependant.



The last remaining representatives of *Leipoa*, the Malleefowl is a genus of mound-building birds in the *Megapodiidae* family. Photo: Sharon Gillam.

## INVESTIGATING WOYLIE DECLINES, WA

From July 2013 to July 2016, the Foundation is supporting researchers from Murdoch University in Western Australia. These researchers are investigating the role of stress and disease in the decline of the Woylies, also known as Brush-tailed Bettongs.

Woylies became the first Australian mammal to be delisted as endangered in 1996. However since around 2000, their numbers again plummeted despite persistent conservation efforts.

The reasons for this plummet are still unknown, making this research crucial to ongoing conservation strategies. Today, Woylies are critically endangered, with only a few hundred remaining in the wild across Australia.

Research suggests that disease may be the reason Woylie numbers have declined. This research will help scientists and management bodies understand, and fight, threats to Woylie survival.

Woylies live in open forests and woodlands between South Australia and Western Australia. They are about the size of a guinea pig and are nocturnal, solitary animals. They play an important environmental role by spreading seeds and fungal spores.



Woylies, aka Brush-tailed Bettongs, rest during the day and spend their nights foraging for food and searching for mates. Photo: S J Bennett.

## PORT MACQUARIE KOALA GENETICS, NSW



Some of the Australian Centre for Wildlife Genomics team, working on the Port Macquarie Koala genetics project. Photo: Dr Rebecca Johnson.

The Foundation is supporting a project by the Australian Museum Research Institute, in conjunction with the Port Macquarie Koala Hospital, into the genetic diversity of Koala populations in the Port Macquarie area.

Koalas are experiencing increasingly fragmented population dispersal across eastern Australia. As a result, their genetic health can suffer through inbreeding. While Koala populations in the southern parts of Australia appear secure, the northern Koala populations are declining.

This research is assessing the genetic health of Port Macquarie's Koalas, and determining if the area is a genetic hotspot for this species. This data will provide insights needed to preserve Koalas.

## BUILDING SEED BANKS, NSW & QLD



Myrtle rust on Geraldton Waxflower buds. When a plant is first infected, bright yellow pustules form on the outer tips of leaves. Photo: John Tann.

The Foundation provided \$15,000 to support researchers from the Australian Seed Bank Partnership to collect seeds from eight threatened native plant species in danger of being infected with Myrtle rust.

Myrtle rust is an introduced fungal disease affecting wild plant populations throughout Eastern Australia. It is becoming a significant national threat to many iconic plant species.

The seeds are being stored in specially designed seed banks in New South Wales and Queensland. Studies and seed propagations will be carried out so the plants can be re-introduced into the wild if required in the future. One third of Australia's flora is safeguarded in seed banks, including 25% of our threatened plants.

## MONITORING PENGUIN ISLAND, WA



George Shedrawi, Research Scientist of the Department of Parks and Wildlife, holding a Little Penguin. Photo courtesy of George Shedrawi.

Thanks to funds from the Australian Geographic Society in 2013, the Foundation was able to support a project to monitor, evaluate, and report on the Little Penguins of Penguin Island, off the West Australian coast.

Penguin Island is aptly named as it supports the largest penguin colony in the state. As penguins will return to the same breeding place year after year, it is important to protect these locations, and we aware of changes and trends as they are occurring.

Thanks to this project, a clearer picture will be gained of the health of individual penguins and how many penguins return to Penguin Island for breeding season. The data collected will inform future conservation plans and assist in managing disease outbreaks.

## GRANITE ISLAND LITTLE PENGUINS, SA



Little Penguins on Granite Island. Our pets such as cats and dogs can cause big problems for Little Penguins. Photo: Arthur Chapman.

Thanks to funds from the Australian Geographic Society and Action Campaign for Endangered Species in 2013, the Foundation was able to support a project to investigate the sharp decline of Little Penguins on Granite Island, off South Australia's coast.

Granite Island has seen a dramatic decline in penguin numbers in just a few short years. From 2001-2012 numbers have gone from 1,548 to just 26.

This project aims to determine the cause of death, disease, or parasite loads of deceased Little Penguins in Gulf St Vincent, including Granite Island. The information gathered will identify threats to the Little Penguins and shape management responses.



DISAPPEARING SEA SNAKES, WA



The Olive Sea Snake, *Aipysurus laevis*, is one of the sea snakes grant winner Blanche D’Anastasi is studying. Photo: Vimoksalehi Lukoscheck.

The Paddy Pallin Science Grants are co-funded by Paddy Pallin Foundation, the Foundation for National Parks & Wildlife, and Humane Society International, and administered by the Royal Zoological Society of New South Wales. The Foundation provides grants for marine conservation research through this program.

PhD candidate Blanch D’Anastasi of Queensland’s James Cook University received one of the Foundation’s grants to assist with her research into Western Australia’s sea snakes. Ms D’Anastasi aimed to find out if sea snake species were disappearing from West Australian coasts before they had been discovered. Ms D’Anastasi’s findings will be used to evaluate the conservation status of different sea snakes and inform conservation plans.

NORFOLK ISLAND GREEN PARROTS



A Norfolk Island Green Parrot male and two chicks in their repaired nest, as captured by a remote sensing fauna camera. Photo: Abi Smith.

From July 2012 to November 2013 a program was undertaken on Norfolk Island, funded by the Foundation, to assist conservation efforts for the Norfolk Island Green Parrot.

The Green Parrot is listed as Critically Endangered by the International Union for Conservation of Nature. It is believed that predation from rats and cats and a lack of nesting sites are the main cause for the decline of these birds.

By the end of the program, 30 wild nesting sites were constructed and monitored to assess their assistance in parrot breeding. Remote cameras were also set up at the nesting sites to detect potential threats. Other species were also translocated from these sites, and Green Parrot assisted breeding also occurred.

SEA CUCUMBERS & CLIMATE CHANGE, QLD



*Stichopus herrmanni*, one of the sea cucumber species at the heart of grant winner Kennedy Wolfe’s research. Photo: Francois Michonneau.

From 2012 onward, the Foundation and other partners of the Paddy Pallin Science Grants program decided to fund two grants each per year. Early career researchers and PhD candidates are eligible to apply.

PhD candidate Kennedy Wolfe of New South Wales’ University of Sydney received one of the Foundation’s grants to assist with research into the impacts of climate change on sea cucumbers on the Great Barrier Reef. Mr Wolfe aimed to find out more about the important role that sea cucumbers play in the reef ecosystem, by fertilising areas of reef, recycling nutrients and even increasing reef alkalinity. Mr Wolfe’s work will increase knowledge of sea cucumbers and their ecological impacts.

EASTERN BRISTLEBIRD RECOVERY, NSW



The endangered Eastern Bristlebird is threatened by habitat degradation, disturbance by human activity and other factors. Photo: Chris Charles.

In 2011, the Foundation provided funds to rehabilitate habitat for the critically endangered northern population of Eastern Bristlebirds. In 2013, the Foundation provided further funds to support a second phase, to expand and enhance this work, and incorporate two new private landholder sites.

The new project sought to rehabilitate a further 20 hectares of Eastern Bristlebird habitat on five private properties at Gradys Creek in northern New South Wales. It continued to undertake weed control, particularly for Lantana and Crofton Weed.

This second stage of the project allowed for important follow-up native vegetation management and monitoring of Eastern Bristlebirds and small mammals, after environmental burns.

ROCK WALLABY TRANSLOCATION, WA



Vulnerable Black-flanked Rock-wallabies are only found in a small number of locations across Western Australia. Photo: Susan Hunt.

In 2011, the Foundation provided funds to help save the Black-flanked Rock-wallaby, also known as Warru.

Western Australia’s Department of Environment and Conservation and the Martu traditional owners came together to expand the distribution of this species. This was undertaken through careful reintroduction of the wallaby into suitable parts of its former range. Predator baiting operations were also undertaken, as foxes and feral cats were the primary cause of their decline. As of 2013, the translocation process had moved 26 individual wallabies, 20 of which have radio collars. Remote sensing and scat survey areas have also been set to keep track of their dispersal and survival. The results so far have been positive, with all of the wallabies surviving.

SAVING SYDNEY’S LAST CHATS, NSW



White-fronted Chats are considered a vulnerable species in New South Wales. Photo courtesy of Dr Richard Major of the Australian Museum.

In 2013, the Foundation appealed directly to a small group of its very important people to help save Sydney’s last White-fronted Chat population from extinction.

Seven supporters kindly pledged 50% of the \$13,555 required. The Foundation supplied the remainder to ensure this crucial project could go ahead. Thank you to all who contributed.

Of the two remaining populations of White-fronted Chats in Sydney, one at Homebush is functionally extinct and the other at Towra Point is heavily predated upon by ravens. The funds allowed scientists from the Australian Museum to install cages over chat nests to dramatically reduce nest predation rates, so that the chats can successfully incubate and fledge their young.

GREAT KOALA COUNT, NSW

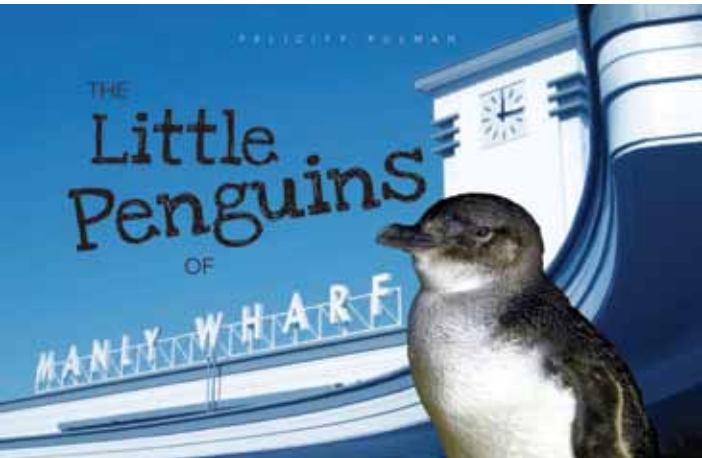


Koalas travelling between trees can be vulnerable to predators such as dogs and foxes. Photo: Tobias Spaltenberger.

In November 2013 the National Parks Association of New South Wales hosted a Great Koala Count. The Foundation for National Parks & Wildlife and Paddy Pallin Foundation provided funding to develop the ‘Bio-Tag’ app used in the Great Koala Count.

This event was a huge success, with over 900 koalas recorded by the public. The results are available here: <http://koalacount.ala.org.au/bdrs-core/npansw/home.htm>. This information provides a valuable source of information on the Koala distribution, habits, and threats and will lead to more effective conservation plans. A Great Koala Count is planned for 2014 due to the success of the 2013 event. Everyone is encouraged to get involved by downloading the ‘Bio-Tag’ app on their phone to tag and record Koala locations.

LEARNING ABOUT LITTLE PENGUINS, NSW



The cover of ‘The Little Penguins of Manly Wharf’ by Felicity Pulman. This book will raise awareness of the need to conserve this unique species.

The Foundation, Landcare Australia, and the National Parks & Wildlife Service supported the publication of a children’s book about the last breeding colony of Little Penguins on mainland New South Wales, which lives at Manly Wharf.

Written by Felicity Pulman, and containing the photos of David Jenkins, this book aims to educate and engage children and the community about the conservation issues surrounding Manly’s endangered population of Little Penguins. It gives tips on what people can do to help protect Little Penguins, provides interesting facts about these birds, and lets you know the stories of Manly’s penguin population. The Foundation is receiving proceeds from the sale of the book to support Manly’s Little Penguins and ensure their long-term survival.



# Environmental Education



Photos taken by Backyard Buddies. Left: A Swamp wallaby and a Lyrebird. Photo: Les Goldsmith. Middle: An Eastern Water Dragon in a Brisbane backyard. Right: A friendly Kookaburra spotted in Rainbow Beach near Gympie, Queensland. Middle and right photos: Linda May.

## ENVIRO EDUCATION IN YOUR BACKYARD

**Backyard Buddies is an environmental education program run by the Foundation for National Parks & Wildlife. Since 2008, it has been giving people tips on how to make their backyards and local areas a more friendly place for native animals and plants.**

2013 saw great changes to the Backyard Buddies website. It has had a wonderful make over and is now more interactive and visual, enhancing the experience for visitors to the site. It's now easier to find information on backyard buddies so why not check it out at [www.backyardbuddies.net.au](http://www.backyardbuddies.net.au).

Register on the website for B-mail, a free monthly e-newsletter about animals you're likely to see in your backyard that month.

Four new toys were added to the Backyard Buddies lineup in 2013—the Echidna, Platypus, Frog, and Cockatoo. You can start your own collection by calling the Backyard Buddies Adoption Centre on 1800 283 343 (free call).

Funds raised through the sale of Backyard Buddies toys is used by the Foundation for conservation programs for Australian animals. In 2013 the Foundation received over \$100,000 through the sale of Backyard Buddies toys.



Backyard Buddies is one of the Foundation's most popular programs. It provides environmental education Australia-wide. Photo: Sarah McEwin.

## JENOLAN CAVES – THE SCIENCE, NSW

**In 2013, the Foundation provided a grant of \$10,000 towards the writing and publication of a book about the science behind Jenolan Caves and its history.**

The book's objective is to widen and deepen public understanding of Australia's most famous caves, without feeling like a reproduction of academic papers.

Despite significant research and writing on the Jenolan Caves Karst Conservation Reserve, information and resources are limited and not always accessible to staff and visitors.

There is no authoritative publication on the science of the Jenolan Caves and the last comprehensive guide to the caves was made over 30 years ago. Given the popularity of the area, the Foundation supported the provision of accurate and up-to-date information for visitors and staff.

Around ten experts in their field were asked to contribute to sections of the book, including at least two guiding staff with professional qualifications. The book will be available for purchase in 2014.



Jenolan Caves are the oldest discovered open caves in the world, and are extremely popular with visitors. Photo: Paul D'Ambra.

## SUPPORTING LAND FOR WILDLIFE



Land for Wildlife delegates on a field trip during Day Two of the Land for Wildlife Forum. Photo courtesy of Carolyn Smith.

**The Foundation contributed \$5,000 towards the 3rd Biennial Land for Wildlife Forum of the Community Environment Network Inc. (CEN), which was held on 16-17th August 2013.**

CEN coordinates Land for Wildlife in New South Wales. This program is a voluntary property registration scheme for landowners who wish to manage areas of their land for wildlife habitat and biodiversity.

The aim of the forum was to help landholders with Conservation Agreements and Wildlife Refuges to network with others in their area. It also provided support and education to help landowners to maximise the good work they are doing on their properties. The Foundation's CEO Ms Susanna Bradshaw was a guest speaker at this event.

## MONITORING MAMMALS POST-FIRE, VIC



An image of a wallaby and her young captured by a remote sensing camera. Photo courtesy of Caitlin Griffith.

**The Victorian National Parks Association and volunteers ran a mammal monitoring project to examine the impact of the 2009 Black Saturday fires on mammals. The Foundation provided \$13,000 to help with the training, reporting and analysis of the monitoring activities.**

Motion sensing cameras and bait stations were set up by volunteers, scientists and land managers at various locations throughout the Bunyip State Park to record and map the different species in the area.

The cameras captured images of a variety of animals including the endangered Southern Brown Bandicoot. There were no recent records for this species in the park. The information gathered will shed some light on the populations affected by the fires and provide valuable data for land managers.

### Protect Australia's Natural Gifts

After taking care of loved ones, many people leave gifts in their Wills for the charities and causes they have supported or admired over the years. Is this something you would like to consider?

By including the Foundation for National Parks & Wildlife in your Will, you can ensure that future generations will be as lucky as you have been.

Your gift will:

- add land to Australia's permanently protected national parks and restore and regenerate habitats;
- protect threatened species;
- conserve and communicate cultural heritage;
- improve visitor facilities in parks; and
- educate and engage current and future conservationists.

Each and every one of us has it in our power to help protect Australia's environment and natural gifts. Your support makes a real difference.

We understand that including a charitable gift in your Will is a very personal decision. Please seek legal advice in composing your Will.

**Visit [fnpw.org.au/bequest](http://fnpw.org.au/bequest) to download an information brochure.**

### Leaving a gift in your Will to the Foundation for National Parks & Wildlife

Thanks to bequests left by kind individuals over the years, the Foundation has been able to purchase and protect hundreds of thousands of hectares of land, and run important and effective threatened species recovery programs.

If you are thinking of leaving the Foundation a bequest, or are one of many who have already decided to but not notified us, we would love to hear from you.

You can let us know what you would like your gift to achieve. You might like it to go towards programs for your favourite Australian animal, or to help restore a wetland, or you might like it to buy as much high conservation value land as possible.

We are happy to accommodate your wishes, and we would love to recognise and thank you for your generosity.

You too can have a hugely positive impact upon conservation in Australia. Leave the Foundation a gift in your will and you will help ensure a bright future for Australia's amazing landscapes and unique native plant and animal species.

**For more information about leaving a bequest to your Foundation, please call (02) 9221 1949 or email [fnpw@fnpw.org.au](mailto:fnpw@fnpw.org.au).**



# Preserving & Celebrating Cultural Heritage



Left: Mungo's Walls of China. Photo: Dan Palmer. Middle: The vulnerable Waddy Tree. Photo courtesy of Desert Channels Queensland. Right: Mungo's landscape is characterised by amazing natural formations. Photo: Dan Palmer.

## WADDY TREES AND CULTURE, QLD

The Foundation supported a project for the nationally vulnerable Waddy Tree, *Acacia peuce*, which only remains in three known populations, all on the edge of the Simpson Desert. One population is found in south-eastern Northern Territory, and two are found in Queensland, south of Boulia and north of Birdsville.

Waddy trees are slow-growing and can live to be 500 years old. They have great mythological significance for Aboriginal people. With so few Waddy Trees remaining, this collaborative project aimed to engage indigenous and non-indigenous community members to undertake activities to raise awareness of its cultural and environmental significance, and ensure the future recovery of this species.

Planned activities were a seed collection event, seed propagation, and a planting event engaging the local school. Improved signage and brochures were intended to increase awareness across the indigenous and non-indigenous communities.

Seed propagation trials were to be undertaken at a nursery site provided by the Boulia Shire Council in conjunction with the Pitta Pitta Aboriginal Corporation.



Indigenous Land and Sea Rangers travelled to Boulia, where a Waddy Tree population is found. Photo courtesy of Desert Channels Queensland.

## MUNGO GATEWAY UPDATE, NSW

The Foundation is partnering with the Office of Environment and Heritage to deliver an exciting project at Mungo National Park. The Mungo Gateway, proposed for the Willandra Lakes World Heritage Area, is the product of exhaustive consultation and extensive project documentation.

The business case, prepared by Urbis Pty Ltd in the first half of 2013, endorsed the project. It stated that the project delivered against all assessment criteria. It noted that some of the key social benefits of the project would offer a high degree of value to the broader community—which would have a value equal to if not greater than benefits that can be tied to any financial assessment.

It is hoped that contributions from government and private philanthropists will support the internationally regarded architect Glenn Murcutt AO, and design partner Wendy Lewin, with the architectural design. Contributions will also need to support construction of Mungo Gateway.

All stakeholders continue to express their ongoing support, and the Mungo Gateway has the potential to be an iconic project garnering international attention.



Mungo's Walls of China are imposing yet fragile formations of sand and clay that have been sculpted by erosion. Photo: Dan Palmer.

# Working in Partnership





# Foundation Supporters

## Not-for-Profit

Action Campaign for  
Endangered Species  
Australian Geographic Society  
CAF Community Fund Ltd  
Greening Australia  
Humane Society International  
Landcare Australia Ltd  
Nature Conservation Trust of  
NSW  
Trinity Grammar School  
Up and Downers Bushwalking  
Club Inc  
Wildlife Land Trust

## Corporate

Aussie Recycling Program  
Backyard Buddies Aust Pty Ltd  
Clayton Utz  
Everyday Hero Pty Ltd  
Foxtel  
GlobaLinks Learning Abroad  
Hallas Trading Co. Pty Ltd  
Hindmarsh Investments Pty Ltd  
John Swire & Sons Pty Ltd  
Keller Australia  
Macquarie Centre  
Mawland Quarantine Station  
Pty Ltd  
Mitsubishi Australia Ltd  
nudie™  
Premium Fulfilment Services  
Programmed Property Services  
St George Bank Ltd  
Stuart Alexander & Co Pty Ltd  
Treefriends Pty Ltd  
United Way Sydney  
Zip Industries

## Government

NSW Office of Environment &  
Heritage

## Trusts & Foundations

Beswick Family Fund  
Diversicon Environmental  
Foundation  
Kahn Friedlander Family  
Foundation  
Karma Currency Foundation/  
GoodCompany  
Macquarie Group Foundation  
Maple-Brown Family Charitable  
Foundation  
The Broinowski Foundation  
Paddy Pallin Foundation  
The Dick and Pip Smith  
Foundation  
The Trust Company Limited

## Workplace Giving

Ernst & Young Australia  
Google  
Herbert Smith Freehills  
JBWere  
Lumo Energy

Macquarie Group Foundation  
McKinsey & Company  
Optus  
Origin Energy  
RailCorp

## Land Donations

Stephen & Yuana Hesketh

## Individual Donors

### > \$5,000

Dr John Brereton  
Mr Christopher Grubb  
**\$1,000 - \$4,999**  
Mr Scott Aitken  
Mr David Archer  
Mr Jamie Bell  
Mr & Mrs Alex & Heather  
Berlee  
Mrs Heather Berry  
Mr Adam Bester & Ms Jane  
Coshutt  
Mrs Gloria Bristow  
Mr Ned Bruno  
Mr John Burke  
Mr Robin V Carey  
Mrs Evelyn Elfick  
Ms Rhonda Fadden  
Dr Fiorina Gabba  
Mr Edward Griffin  
Ms Jennifer Harris  
Mr & Mrs W Hayward  
Mr Peter Henchman  
Dr Jeffrey Horton  
Dr Judith Kinnear  
Mr John C H Lawes  
Dr Manfred Lenzen  
Ms Carol Liu  
Mr Bob Marshall  
Miss Diane Mitchell  
Ms Leigh Murray  
Mrs Anne Peaston  
Mr David G Pumphrey  
Mr Peter R Robson  
Ms Nicola Scheepers  
Mr Martin Sides  
Ms Elaine Southwell-Keely  
Ms Denise Walters  
Dr Pauline Warburton

**\$500 - \$999**  
Mr & Mrs Robert & Libby  
Albert  
Mr Ross Anstey  
Ms Fern Ausland  
Mrs Diane Barnes  
Ms Baiba Berzins  
Mr & Mrs Mark Bethwaite AM  
Mrs Christina Borowich  
Mr John Brayan  
Mrs Jennifer Bubke  
Mrs Inge Buchanan  
Mr Tim Capes  
Mrs Rosie Cavaleri  
Mrs Helen Christian  
Mr & Mrs Simon & Sue Cooper

Mr Antony Coote AM  
Mr Jean-Claude Decosterd  
Mr George Dowling  
Mr Michael Dyer  
Mrs Wendy Gelhard  
Mr Daryl George  
Mr Geoffrey Graham  
Mr Andrew Graljuk  
Mr James Guida  
Mr & Mrs Norman & Laurel  
Harris  
Mr Lindsay Harrison  
Mr Martin Hendy  
Mrs June Hicks  
Mr Kent Hindmarsh  
Mr Peter Homel  
Dr & Mrs Peter & Robyn  
Hyland  
Mr & Mrs Feroze & Judith Irani  
Mr Peter Janssen  
Mr Alan Jones  
Mr Geoffrey E Kidd  
Mr Michael King  
Ms Naomi Landau  
Mrs Marie-Louise Lees  
Mr Fred Mayer  
Ms Sue McGrath  
Mr Greg McKenzie  
Mr Johannes Magnus Nickl  
Mr Mark Nowlan  
Ms Anabel Parbury  
Mr LLOYD Paskins  
Ms Jill Paterson  
Ms Anna Pesten  
Mr Thomas Phillips AM  
Dr John Pitt  
Mrs Jeanette Robinson  
Ms N E Ross  
Mr H C Russell  
Mr Mike Sharpin  
Mr Robin Simms  
Ms Norma Smith  
Mr Robert Spry  
Dr Don Stammer  
Mrs Anne Sullivan  
Ms Witi Suma  
Ms Louise Taggart  
Mrs Valerie Taylor  
Ms Merryn Tendys  
Mr & Mrs R Thomas  
Dr Anthony Tong  
Mrs Ruth Toop  
Mrs Margaret Vere  
Mr Rudi Vogeli  
Ms Lisa Vos  
Mrs R Wall  
Mr Hans Walloschek  
Dr John R Warneford &  
Family  
Dr & Mrs J & A Whaite  
Mr James Williams

## Pro Bono Support

Aurora Community Channel  
Australian Association for  
Environmental Education  
Bangarra Dance Theatre  
Budgy Smuggler  
Event Aid Australia  
Great Eastern Ranges Initiative  
Griffith Hack  
Harvest Seeds and Native  
Plants  
Malcolm Auld Direct  
Peats Ridge Sustainable Arts  
and Music Festival  
PwC Australia  
Sydney Skinny  
Valiant Hire

## In-kind Support

Australian Wildlife Displays  
Auswide Productions  
Belinda Franks Catering  
Catchment Mangement  
Authorities NSW  
Chancellor Hattersley Lloyd  
Community Environment  
Network  
Cornerstone Advisory  
One Stop IT Solutions  
Shynet Solutions  
The Last Post  
Wirth Consulting

## Volunteers

Malcolm Auld  
Jim Bradshaw  
Ben Childs  
Sandra Duncanson  
Siobhan Fitzgerald  
Leonie Gale  
John Hancock  
Katie and Kent Hindmarsh  
Joel Ibbetson  
Kaitlyn Lawler  
Avleen Masawan  
Iona Mitchell  
Dan Palmer  
Clare Pearce  
Sarah Sims Clarry



## Foundation Supporters

Thank you to every person who supported the Foundation for  
National Parks & Wildlife in 2013. Every gift makes a difference,  
no matter how large or small. **Nothing is possible without you.**

# Foundation Members



## Patron

Her Excellency the  
Governor of New South  
Wales Professor Marie  
Bashir AC CVO

## Honorary Life Governors

Mr J Gillis Broinowski AM  
Mr Michael Crouch AO  
Mr G Stan Davis OAM  
Mr Peter H Henchman  
The Hon. Tom L Lewis AO  
Mr Robert Whyte

## Governors

Mr David Archer  
Ms Fiona Archer  
Mr Geoff Ashton  
Mr Malcolm Auld  
Mr Mark Bethwaite AM  
Mr Michael Bray AM  
Mr Garry Browne AM  
Mr John S Buckley  
Mr J Robert Cadwallader  
The Hon Bob Carr  
Mr Guy Cooper OAM  
Mr Antony Coote AM  
Prof Philip Cox AO  
Mr Christopher Dawson  
Mr John B Fairfax AO  
Mr Julian Gosse  
Mr Edward Griffin  
Mr Greg Griffiths  
Mr J Henry Herron  
Mrs Sally Humphrey  
Mr Peter Janssen  
Mr Wayne Kingston  
Mrs Sue Maple-Brown AM  
Mr Andrew Murray  
Ms Melinda Murray  
Mr Graham N Nock AM OBE  
Mr Anthony W Perry  
Mr Thomas R Phillips AM  
Mrs Elizabeth P Plaskitt  
Mr David Pumphrey  
Mr Angus M. Robinson  
Mr Tony Sherlock  
Mr Don Stammer  
Dr Hugh Taylor  
Mr John S Walton AM  
Mr Geoff C Wild AM  
Ms Mary-Louise Williams AM



## Founder

The Hon. Tom L Lewis AO, former Premier of New South Wales

As Lands Minister, the Hon. Tom L Lewis AO founded the Foundation  
for National Parks & Wildlife in 1970 to be the fundraising arm of the  
newly established National Parks & Wildlife Service. In 2000, the  
Foundation's members voted to expand the scope of the Foundation's  
work beyond New South Wales to all of Australia.

## Life Members

Mr J Allan  
Dr K Bailey  
Ms J Bennett  
Mr RA Bliim  
Mr & Mrs CK & SP Blunsden  
Mr W Boyd  
Mr Keith Broadfoot  
Mr Ken Broadfoot  
Mrs Michelle Broinowski  
Mr W Brown  
Mr M Butler  
Mr RV Carey  
Mr B Chow  
Mr PR Clisdell  
Judge RG Craigie  
Mr & Mrs TF & LE Crehan  
Mrs M Crouch  
Mr IR Finlay  
Miss JA Finnimore  
Dr GE & Mrs LA Ford  
Mr Christopher Grubb  
Mr R Hackelton  
Mr SC Harris  
Mr L Heidenreich  
Mr & Mrs R & M Horne  
Mr Klaus Hueneker AM  
Mrs P Hunstead  
Mr R Ierace  
Mr M Ierace SC  
Mr GE Kidd  
Mr RG Kitchen  
Ms L Kong  
Mr JCH Lawes  
Mr J Lawrence  
Mr John Laws CBE  
Mr B Loffel  
Mrs P McMahon  
Ms J Middleton  
Mr P Middleton  
Mr FW Millar CBE  
Mr & Mrs BW & HE Miller  
Ms K Moylan  
Mr SB Myer AC  
Dr MW Navin  
Mr VR Norrgard  
Mr H Outhred

## Life Members continued

Mr R Patrick  
Mr JM Phillips OAM  
Mrs M Pickworth  
Mr RE Popplewell  
The Earl of Portarlington  
Mr T Robertson  
Mr & Mrs NE & J Robinson  
Mr CR Simson  
Ms AM Smith  
Dr AM & Mrs CA Stevens  
Mrs A Styles  
Mr WB Tanner  
Mr & Mrs D & S Temperley  
Mr & Mrs D & J Thomas  
Mr & Ms C & J Tzannes  
Miss Van Leeuwen & Mr Cub-Bon  
Mr B Waddington  
Mr Hans Walloschek  
Mr D Waterhouse  
Mr BC Weldon  
Ms R Whatman  
Mr JBJ Wilson  
Mr J Wood

## Foundation Members

The Honorary Life Governors,  
Governors and Life Members are  
the members of the Foundation for  
National Parks & Wildlife, and are  
its owners.

The Foundation's Constitution  
states that the number of Governors  
is declared to be a minimum of 50  
and a maximum of 150.

The Constitution classifies  
Governors as those persons other  
than Life Governors who apply  
to become a Governor and are  
admitted to become Governors.

Life Governors are defined as  
persons admitted from time to time  
by the Directors as Life Governors  
of the Foundation.

All Life Members are Governors  
who are exempt from paying an  
annual fee due to exemplary service  
paid to the Foundation.



# The Foundation’s Board of Directors



## GARRY BROWNE AM

**Appointed Director 2010**  
**Appointed President 2013**  
**Nominations Committee Chair**  
**Finance & Risk Committee Member**

Garry Browne AM is the CEO & Managing Director of Stuart Alexander & Co. Through the philanthropic arm of Stuart Alexander & Co, Garry founded the S’Team Foundation, which supports and empowers underprivileged Australian youth.

Garry has a long history with the Rotary Club of Sydney and is currently a District Governor in Sydney. Garry is also currently a Director of Outcomes Australia. Garry has a Bachelor of Business from UTS and is a former student of the Harvard Business School, where he completed the Owner President Management Program (OPM).

An active philanthropist, Garry was recently recognised with an Order of Australia (Member) for significant service to the community as a supporter of a range of social welfare, environmental organisations and business.



## PETER HENCHMAN

**Appointed Director 1984**  
**Appointed Secretary 1984**  
**Appointed Vice President 1996**  
**Retired 2013**

Peter graduated in Arts and Law from Sydney University and in 1960 joined a firm of solicitors, becoming senior partner in 1985.

In 1986 Peter and his wife bought a weekender deep in Wollemi National Park and set about establishing an apple orchard. In 1995 Peter retired from the partnership to devote his time to orcharding.

When Peter joined the governing body of the Foundation in 1984 he took responsibility for projects and held that position until retiring as Chairman of the Projects Committee in 2011.

Peter retired from the Foundation’s Board in 2013, and remains a governor.



## MARK BETHWAITE AM

**Appointed Director 2009**  
**Finance & Risk Committee Member**  
**Nominations Committee Member**

Now a professional director, Mark Bethwaite has a Bachelor of Engineering and an MBA.

Mark has been Managing Director of two of Australia’s largest mining companies and one of Australia’s leading industry associations. In 2013, Mark was appointed Chairman of the Sydney Catchment Authority.

Mark represented Australia in sailing in the 1972 and 1976 Olympic Games and has won World Championships in a number of classes.

In 2011, Mark was made a Member of the Order of Australia for services to industry and to sailing.



## PETER JANSSEN

**Appointed Director 1999**  
**President from 2005 to 2013**

Having spent most of his career building Utilux, an Australian based manufacturer of electrical and electronic components, Peter has extensive board experience with private, government and not-for-profit organisations.

Past appointments include President of the Australian Electrical and Electronic Manufacturers’ Association (AEEMA), President of Australian Business Foundation, and Vice-President of the Federation of Automotive Products Manufacturers (FAPM).

Prior to joining Utilux, Peter graduated from the University of Sydney in Economics and Law, and gained an MBA from IMD in Lausanne, Switzerland.

In his spare time, Peter enjoys cycling and running through local national parks.



## ANGUS M ROBINSON

**Appointed Director 2007**  
**Appointed Vice President 2013**  
**Projects Committee Chair**  
**Retired 2013**

Angus M Robinson MAICD FAIM FAusIMM (CP), Managing Partner of Leisure Solutions®, is a geologist by profession engaged in experiential travel with a focus on ecotourism and geotourism.

In earlier years, Angus held senior executive roles and board positions in a wide range of organisations in both the government and not-for-profit sectors, specialising in hi-tech manufacturing, technology development, major public attractions, and resource management. Angus is also a Member of the Environment Institute of Australia and New Zealand as well as a member of the Rotary Club of Wahroonga. Angus retired from the Foundation’s Board in 2013, and remains a governor.



## FIONA ARCHER

**Appointed Director 2010**  
**Appointed Treasurer and Secretary 2013**  
**Finance & Risk Committee Chair**

Fiona’s career spans 27 years in global finance. Fiona has a Bachelor of Business Studies from Swinburne University, Melbourne and began her career as an auditor with Ernst and Whinney in Melbourne.

Fiona worked as a mining analyst for Prudential Bache in Melbourne and New York and Ord Minnett in London and Sydney prior to moving into mining finance with Resource Finance Corporation and BBY Corporate Services. Fiona spent nine years as a financial adviser at UBS Wealth Management.

Fiona is currently a Director at JBWere in Sydney, providing financial advice to high net worth families and individuals. Fiona has spent the last 13 years providing financial advisory services to not-for-profits.



## MELINDA MURRAY

**Appointed Director 2011**  
**OEH Representative**

Melinda has held a range of senior management roles in the NSW National Parks & Wildlife Service within the Office of Environment and Heritage since joining as the Manager, Reserve Establishment and Land Information in late 2010.

Melinda’s experience in leading land acquisition, reservation and wilderness programs led to her appearing in 2012 as a key NPWS witness at the Legislative Council’s Public Land Inquiry giving evidence about the scientific basis for the establishment of national parks. Melinda also sits on the Board of the Nature Conservation Trust and the Environmental Trust Sub-committee overseeing the Western Sydney Growth Centres Biodiversity Offsets Program. From 1995 to 2010 Melinda worked with the Legal Services Branch in OEH’s predecessor agencies, most recently as a Principal Legal Officer providing legal advice and managing legislative reforms.



## MARY-LOUISE WILLIAMS AM

**Appointed Director 2013**  
**Fundraising & Marketing Committee Member**

Mary-Louise has been a leader in the Australian cultural sector for 25 years. For the past 10 years Mary-Louise has been Director of the Commonwealth Government’s Australian National Maritime Museum in Sydney.

Mary-Louise has forged strong ties with international organisations, represented the Government at major events in Australia and overseas, chaired several international and local cultural committees and refereed funding programs and academic journals in the UK, Australia and elsewhere.

Mary-Louise has strong leadership and management experience and has overseen several significant building programs at ANMM’s Darling Harbour site. Since leaving ANMM in 2012, Mary-Louise continues to apply her skills as an advisor to Government and community groups on cultural matters. Mary-Louise was appointed Member of the Order of Australia in January 2013.



Left: Director David Pumphrey visiting the White-fronted Chat project, which he personally helped to fund. Directors Mark Bethwaite and retired Director Peter Henchman also helped fund this project. Photo: Dr Richard Major. Right: Director Fiona Archer visiting Kinchega National Park’s Woolshed which the Foundation helped restore during the 1970s with funding from the Broken Hill Group of Companies. Photo: Andrew Ratciff.



## DAVID PUMPHREY

**Appointed Director 2012**  
**Fundraising & Marketing Committee Chair**  
**Nominations Committee Member**

David holds an MA in Economics and Political Science, and MBAs from Cranfield School of Management and Harvard Business School. His career spans Consulting and Management in the UK, Holland, Ireland, and Australia.

David has a wide network of contacts and significant experience as an international executive search consultant built up over 28 years in the industry. David has worked extensively in the areas of CEO and board appointments and reviews, and education and social enterprise. David is a past Director of the National and New South Wales Societies of Multiple Sclerosis, and a past President of the Harvard Club of Australia. David is a past Director and current Life Member of the Bell Shakespeare Company.

As well as a Director, David is an ambassador for two Foundation for National Parks & Wildlife conservation projects.

### Foundation Directors

The Foundation’s Directors are unpaid volunteers who donate significant time and energy to the governance of the organisation.

Effective governance structures allow the Foundation to create value through innovation, development, and exploration. These structures also provide accountability and control systems commensurate with the risks involved.

The Board sets the vision, mission, and strategies of the Foundation, and adapts the direction or plans as appropriate. It puts in place an appropriate system of risk oversight and internal controls, to ensure that the Foundation delivers on its mission. Each individual member adds to the collective capacity and effective functioning of the Board.

In 2013, the Board of Directors met six times, and made effective use of the Foundation’s four committees on which many Directors also sit.

### The Foundation for National Parks & Wildlife:

- Is registered with the Australian Taxation Office for Goods and Services Tax (GST) ABN 90107744771.
- Is endorsed by the Australian Taxation Office as a Deductible Gift Recipient (DGR) as a public museum and environmental organisation.
- Is endorsed by the Australian Taxation Office as an Income Tax Exempt Charitable Entity (ITEC) as a charitable institution.
- Holds an Authority to Fundraise for Charitable Purposes with the Department of Gaming and Racing in each state.
- Is exempted by the Office of State Revenue from pay-roll tax.
- Is Trustee of the FNPW Gift Fund Trust ABN 42651974301 (Deed of Settlement 2 February 2000, DGR, ITEC) that was entered into the Register of Environmental Organisations kept by the Australian Government DSEWPaC on 9 February 2001 and entitled to receive tax deductible donations of money and property.
- Was incorporated on 29 June 1970 as a company limited by guarantee ACN 000 744 516 regulated by the Australian Securities and Investment Commission to protect consumers, investors and creditors.



# Committees & the Volunteer Members

## PROJECTS COMMITTEE

The Project's Committee oversees the delivery of the Foundation's conservation grants program including strategic priorities, assessing projects for funding and monitoring projects progress and performance. The Committee reports back to the Board.

### Project's Committee Members



Chair,  
Angus M Robinson



David Butcher



Sue Maple-Brown  
AM



Ian Paterson AM



Margo Pickworth

## FUNDRAISING & MARKETING COMMITTEE

The Fundraising & Marketing Committee provides strategic guidance and tactics in relation to fundraising, marketing, and events, including overall plans. The Committee reports back to the Board.

### Project's Committee Members



Chair,  
David Pumphrey



Cathy Beer



Simon Carter



Rod Dowler



Mary-Louise  
Williams AM

## FINANCE & RISK COMMITTEE

The Finance & Risk Committee provides strategic guidance in relation to the Foundation's financial direction, including financial and revenue growth plans, and reviews financial processes. It also oversees audit requirements. The Committee reports back to the Board.

### Finance & Risk Committee Members



Chair,  
Fiona Archer



Garry Browne AM



Mark Bethwaite AM

### Finance & Risk Committee Members



Chair,  
Garry Browne AM



Mark Bethwaite AM



David Pumphrey

## NOMINATIONS COMMITTEE

The Nominations Committee refers nominations for Board Directorships and Governorships to the Board. It meets as required.

### The Foundation's Committees

The Committees contribute to the leadership and decision making of the Foundation, and are staffed by unpaid volunteers. A Board member chairs each Committee, and the Foundation's CEO and relevant staff members attends committee meetings. The Projects Committee, Marketing & Sales Committee, and the Finance & Risk Committee each met six times in 2013. The Nominations Committee met as required. While Board meetings are formal, committee meetings provide a space to workshop ideas. Each Committee makes recommendations to the Board.

# Foundation Staff



### Chief Executive Officer – Susanna Bradshaw

Susanna joined the Foundation in 2009 as the Online Communications & Publications Coordinator, and was promoted to Marketing Manager in 2010. In May 2012, Susanna was promoted Chief Executive Officer of the Foundation, and she is responsible for the strategic direction and day to day operations of the Foundation.

Prior to joining the Foundation, Susanna ran her own business for over ten years. Her background is in business management, operations, design, production, advertising, communications and marketing. In 2013, Susanna graduated with a Bachelor of Environmental Science, Conservation and Management from Charles Sturt University. Susanna was awarded the North East Catchment Management Authority Award for Academic Excellence in Environmental Management for the graduating student with the most outstanding academic performance in the Bachelor of Environmental Science.



### Donor Relationships Manager – Kathy Creary

Kathy joined the Foundation in 2008. Kathy is responsible for donor database maintenance, donor care, receipting, banking and administration. She is always available to have a friendly chat to all who call, and ensures that daily operations run smoothly. Kathy's background is in advertising, commercial photography and customer service.



### Communications & Marketing Manager – Melanie Wagner

Melanie joined the Foundation in 2010, as Online Communications & Publications Coordinator. Melanie was promoted to Communications Manager in 2012, and promoted again in 2013. Melanie's background is in copywriting, marketing and communications. Melanie is also studying an MBA majoring in not-for-profit management.



### Fundraising & Development Manager – Emma Lipscombe

Emma joined the Foundation in 2012. Emma works three days a week, applying for grants, and developing fundraising strategies and partnerships to support the Foundation's programs. Emma's background is in communications, public relations, events and fundraising for not-for-profit organisations.



### Grants Manager – Margaret Hobbs

Margaret joined the Foundation in 2012, as the Grants Programs Manager four days a week. Margaret is responsible for developing and managing the Foundation's grant programs for conservation-related projects on both public and private lands. Margaret comes to us from Boeing, and has extensive experience in business management, finance and grants.



### Mungo Centre Project Manager – Michelle Dunn

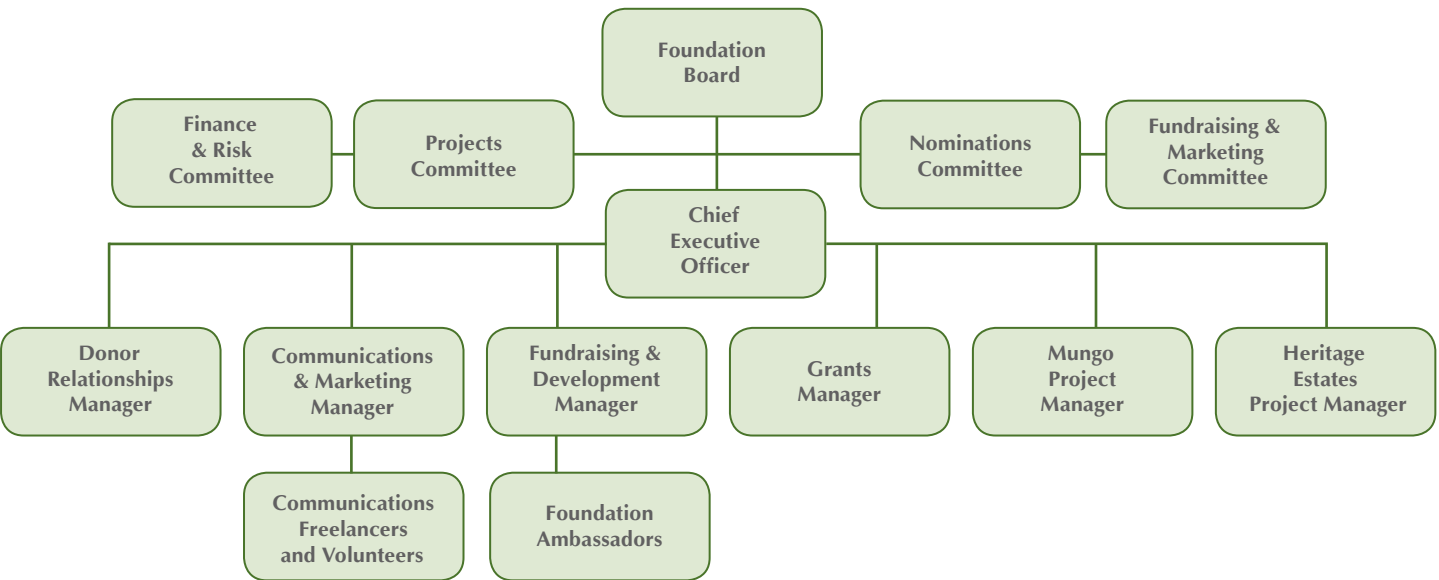
Michelle is the Project Manager of the Mungo Project, which aims to raise funds for and build an iconic 'Mungo Gateway' at Mungo National Park, part of the World Heritage Listed Willandra Lakes Region. It will be designed by architect Glen Murcutt AO.



### Heritage Estates Project Manager – Rubens Delfino

Rubens joined the Foundation in 2012, as the Project Manager for the Voluntary Heritage Estates Land Project. The project will purchase land to add to Jervis Bay National Park. Rubens is a Property Consultant with a background in law and property development.

# Foundation Organisation





# The Foundation's Ambassadors



Clockwise from top left: 1) Ambre Hammond rehearsing for the Foundation's concert at Middle Head. 2) Julie Paterson of cloth. 3) Ian Mortimer and Jake Cassar supporting the Foundation at the Peats Ridge Festival. 4) Jake Cassar at the Foundation's garage sale. 5) Julie's Wollemi Pine print.

### AMBRE HAMMOND

**Concert pianist**

Ambre is passionate about wildlife and the environment. As an ambassador for the Foundation, Ambre tells her audiences about the work of the Foundation, and is an ongoing supporter of our organisation.

### JB ROWLEY

**Author, storyteller and educator**

JB is an ambassador for the Foundation's Mountain Pygmy-possum project. JB latest book features a Mountain Pygmy-possum as a main character, and her passion is to raise awareness of this unique Australian species.

### JULIE PATERSON

**Designer for and owner of cloth fabric**

Julie is inspired by the Australian landscape, and translates what she sees using sustainable materials and found objects. Julie has created a range of fabrics inspired by the Australian environment, and the proceeds from these will go to the Foundation for conservation work.

### EMINÈ MEHMET

**Sustainable Designer**

Eminè is a sustainability ambassador, interior designer, writer and speaker. Eminè helps companies to improve their sustainability practices. Eminè is a proud Ambassador for the Foundation, as it reflects the values and perspectives she holds dear.

### IAN MORTIMER

**Performer & Longyard Sideshow founder**

Ian is a performer experienced in theatre, music, film, circus, puppet making and design. Ian's engaging performances teach audiences about the value of the environment in novel ways. Ian donates a percentage of his performance fees to the Foundation.

### JAKE CASSAR

**Environmentalist and bush craft teacher**

Jake is a well known environmentalist. Jake has spent many years tirelessly devoted to the protection of his local environment, most notably the area known as Bambara. Jake is proud to promote the Foundation and its work.

### BARBARA BUTTERY

**Events Marketer**

As a child, Barbara visited Lord Howe Island and the Daintree, which instilled an appreciation of Australia's amazing flora and fauna. Barbara will use her skills and networks to raise awareness of the Foundation and seek corporate sponsorship for appropriate projects.

### Raising Awareness and Spreading the Message

The Foundation's Ambassadors are individuals in the public spotlight who use their profiles and networks to promote the Foundation and its work. Each works in different ways to tell diverse groups and communities about our environmental conservation work. Each generously donates their time, energy, talents, and more to the vital work that we do.

The Foundation thanks our fantastic Ambassadors!

# Financial Summary

The Foundation for National Parks & Wildlife is a public charity that receives donations from the public, community organisations, trusts and foundations, corporates, government, and its trust, the Foundation for National Parks & Wildlife Gift Fund Trust.

During 2013, the Foundation's gross fundraising activities brought in over \$1.5 million. The Foundation purchased land and made over 140 grants totalling over \$3.8 million.

The Foundation disbursed more funds than it raised due to the significant multi-year government grants it received in 2012 valued at over \$6 million.

In 2013 the Foundation received a state government grant of \$50,000 from the Parks & Wildlife Group of the New South Wales Office of Environment and Heritage.

In 2013, the Foundation received over \$500,000 from its community partners, over \$180,000 from its corporate partners over \$100,000 from trusts and foundation and the remainder of more than \$700,000 from the generosity of the general public.

The Foundation prides itself on its low overheads. It runs a low-resource office with just three full time and two part time staff. From time to time, as required, the Foundation employs freelancers and contractors to deliver specific outcomes.

Figure 1 shows total income, conservation projects and overheads (comprised of total expenditure less conservation projects), over the past six years.

Figure 2 shows from whom Foundation funds were received in 2013. Donations and grants make up the greatest proportion of income.

Figure 3 shows income trends over the last six years. Income was down in 2013 largely due to a large tied grant received in 2012 being partially disbursed in 2013. Income was comparable to 2008-2009 levels. Donations received increased from the previous year.

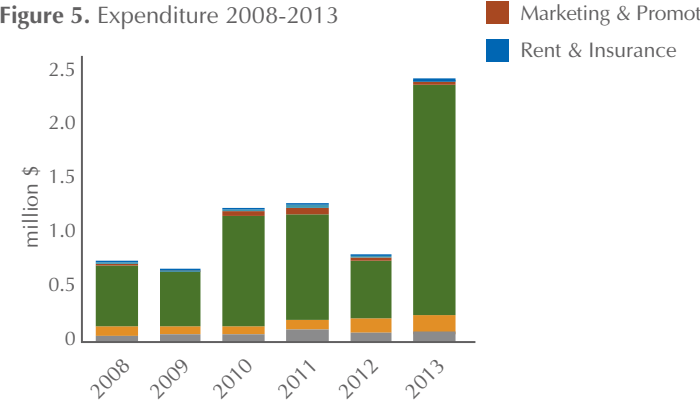
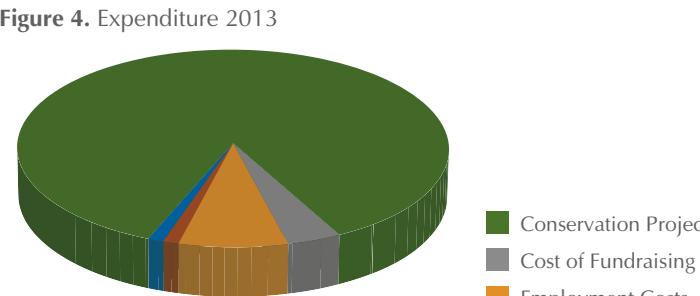
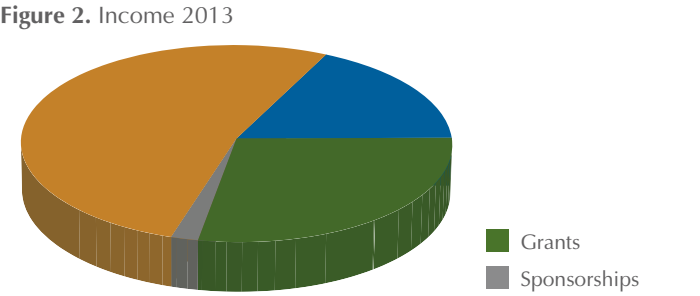
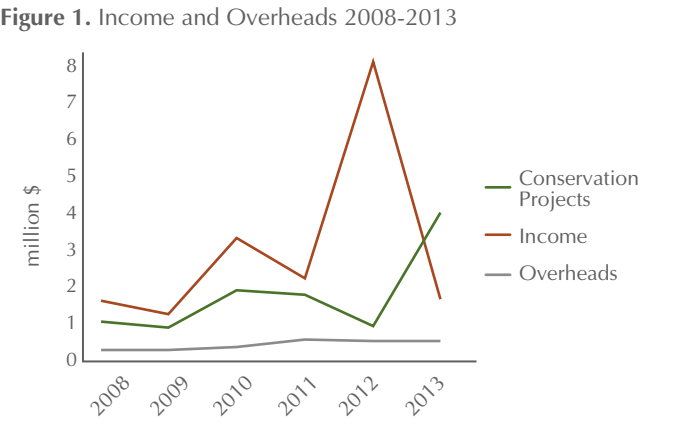
Figures 4 shows how Foundation funds were spent in 2013. Total expenditure for 2013 was over \$4.2 million which comprised over 85% to conservation projects. The total cost of fundraising for 2013 was 10% of total revenue raised.

Figure 5 shows expenditure trends over the past five years. Expenditure was up in comparison to the last five years, due to the delivery of tied grants received in prior years.

The Foundation thanks Grant Thornton for auditing its accounts on an in-kind basis for presentation to ASIC and fundraising authorities. Full copies of the accounts are available on request.

This organisation has been assisted by the NSW Government through its Environmental Trust.

The Voluntary Heritage Estates Land Project is partially funded through the Foundation and the Australian Government's Caring for our Country Grant Program.







The Foundation for National Parks & Wildlife is partnering with the Office of Environment and Heritage to deliver the Mungo Gateway Project. This photos shows the incredible Walls of China at Mungo National Park, at the heart of the Willandra Lakes World Heritage Area in New South Wales.

Photo: Dan Palmer.



**P** GPO Box 2666  
Sydney NSW 2001  
**A** Level 10, 52 Phillip Street  
Sydney NSW 2000  
**T** +61 2 9221 1949  
**F** +61 2 9233 3615  
**W** [www.fnpw.org.au](http://www.fnpw.org.au)  
**E** [fnpw@fnpw.org.au](mailto:fnpw@fnpw.org.au)

Printed on 100% recycled paper



**FOUNDATION FOR NATIONAL PARKS & WILDLIFE**

(A Company Limited by Guarantee)

**Financial Statements for the Financial Year Ended 31 December 2013**

**FOUNDATION FOR NATIONAL PARKS & WILDLIFE**

(A Company Limited by Guarantee)

A.B.N 90 107 744 771

**Financial Statements for the  
Financial Year Ended 31 December 2013**



# **FOUNDATION FOR NATIONAL PARKS & WILDLIFE**

(A Company Limited by Guarantee)

## **Financial Statements for the Financial Year Ended 31 December 2013**

### **Financial Statements 31 December 2013**

1. Directors' Report	2
2. Auditor's Independence Declaration	6
3. Statement of Profit or Loss and Other Comprehensive Income	7
4. Statement of Financial Position	8
5. Statement of Cash Flows	9
6. Statement of Changes in Accumulated Funds	10
7. Notes to the Financial Statements	11
8. Directors' Declaration	22
9. Independent Auditor's Report to the Members	23

These financial statements are the single entity financial statements of the Foundation for National Parks & Wildlife.

The financial statements are presented in the Australian currency.

The Foundation for National Parks & Wildlife is a company limited by guarantee, incorporated and domiciled in Australia. Its registered office and principal place of business is:

**Foundation for National Parks & Wildlife**

Level 10  
52 Phillip Street  
Sydney NSW 2001

A description of the nature of the entity's operations and its principal activities is included in the Directors' Report on pages 2 to 6, which is not part of these financial statements.

The financial statements were authorised for issue by the Directors on 3 April 2014.  
The Board has the power to amend and reissue the financial statements.



# FOUNDATION FOR NATIONAL PARKS & WILDLIFE

(A Company Limited by Guarantee)

## Financial Statements for the Financial Year Ended 31 December 2013

The Directors present their report on the Foundation for National Parks & Wildlife (referred to hereafter as the Foundation) for the year ended 31 December 2013.

In order to comply with the provisions of the Corporations Act, the Directors' report as follows:

The Directors of the Foundation in office at the date of this report are:

### **Fiona Archer**

**Appointed Director 2010**

**Appointed Secretary and Treasurer 2013**

**Finance and Risk Committee Chair**

Fiona's career spans 27 years in global finance. Fiona has a Bachelor of Business Studies from Swinburne University, Melbourne and began her career as an auditor with Ernst and Whinney in Melbourne.

She worked as a mining analyst for Prudential Bache in Melbourne and New York and Ord Minnett in London and Sydney prior to moving into mining finance with Resource Finance Corporation and BBY Corporate Services. Fiona spent nine years as a financial adviser at UBS Wealth Management.

She is currently a Director at JBWere in Sydney, providing financial advice to high net worth families and individuals. Fiona has spent the last 13 years providing financial advisory services to not-for-profits.

### **Mark Bethwaite AM**

**Appointed Director 2009**

**Finance and Risk Committee Member**

**Nominations Committee Member**

Now a professional director, Mark Bethwaite has a degree in Civil Engineering and an MBA. He was Managing Director of two large Australian listed companies then one of Australia's leading industry associations before retiring in 2006. Mark was made a Member of the Order of Australia in early 2011 for services to industry, sailing and maritime heritage.

### **Garry Browne AM**

**Appointed Director 2010**

**Elected President in 2013**

**Nominations Committee Chair**

**Finance and Risk Committee Member**

Garry is CEO/Managing Director of Stuart Alexander & Co. which has been marketing and distributing brands such as Guylian, Mentos, Tabasco, Chupa Chups, Perrier, Werthers and Fisherman's Friend, for over 125 years across Australia and New Zealand.

Garry founded and serves as a Director of The S'Team Foundation, the philanthropic entity of Stuart Alexander & Co. with a focus on developing underprivileged youth. Garry has had a long involvement with The Rotary Club of Sydney. Garry has a Bachelor of Business from UTS and is a former student of the Harvard Business School, where he completed the Owner President Management Program (OPM).

### **Peter Henchman**

**Appointed Director 1984**

**Finance and Risk Committee Member**

**Resigned 2013**

Peter graduated in Arts and Law from Sydney University and in 1960 joined a firm of solicitors, becoming senior partner in 1985. In 1986 he and his wife bought a week-end deep in Wollemi National Park and set about establishing an apple orchard. In 1995 he retired from the partnership to devote his time to orcharding on his farm.

When he joined the governing body of the Foundation in 1984 he took responsibility for projects and held that position until retiring as Chairman of the Projects Committee in 2011.

### **Peter Janssen**

**Appointed Director 1999**

**Elected President 2005**

Having spent most of his career building Utilux, an Australian based manufacturer of electrical and electronic components, Peter has extensive board experience with private, government and not-for-profit organisations.

In his spare time, Peter enjoys walking, running and cycling through local national parks. Prior to joining Utilux, Peter graduated from the University of Sydney in Economics and Law, and gained an MBA from IMD in Lausanne, Switzerland.



# FOUNDATION FOR NATIONAL PARKS & WILDLIFE

(A Company Limited by Guarantee)

## Financial Statements for the Financial Year Ended 31 December 2013

### **Melinda Murray**

#### **Appointed Director 2011**

#### **OEH Representative**

Melinda has held a range of senior management roles in the NSW National Parks & Wildlife Service within the Office of Environment and Heritage since joining as the Manager, Reserve Establishment and Land Information in late 2010.

Melinda's experience in leading land acquisition, reservation and wilderness programs led to her appearing in 2012 as a key NPWS witness at the Legislative Council's Public Land Inquiry giving evidence about the scientific basis for the establishment of national parks. Melinda also sits on the Board of the Nature Conservation Trust and the Environmental Trust Sub-committee overseeing the Western Sydney Growth Centre's Biodiversity Offsets Program.

From 1995 to 2010 Melinda worked with the Legal Services Branch in OEH's predecessor agencies, most recently as a Principal Legal Officer providing legal advice and managing legislative reforms.

### **David Pumphrey**

#### **Appointed Director 2012**

#### **Fundraising and Marketing Committee Chair**

David holds an MA in Economics and Political Science, and MBAs from Cranfield School of Management and Harvard Business School. His career spans Consulting and Management in the UK, Holland, Ireland, and Australia.

He has a wide network of contacts and significant experience as an international executive search consultant built up over 28 years in the industry. He has worked extensively in the areas of CEO and board appointments and reviews, and education and social enterprise. He is a past Director of the National and New South Wales Societies of Multiple Sclerosis, and a past President of the Harvard Club of Australia. David is a past Director and current Life Member of the Bell Shakespeare Company.

As well as a Director, David is an ambassador for two Foundation conservation projects.

### **Angus M Robinson**

#### **Appointed Director 2007**

#### **Projects Committee Chair**

#### **Resigned 2013**

Angus M Robinson MAICD FAIM FAusIMM (CP), Managing Partner of Leisure Solutions®, is a geologist by profession engaged in experiential travel with a focus on ecotourism and geotourism.

In earlier years, Angus held senior executive roles and board positions in a wide range of organisations in both the government and not-for-profit sectors, specialising in hi-tech manufacturing, technology development, major public attractions, and resource management. He is also a Member of the Environment Institute of Australia and New Zealand.

### **Mary-Louise Williams AM**

#### **Appointed Director 2012**

#### **Fundraising and Marketing Committee Member**

Mary-Louise has been a leader in the Australian cultural sector for 25 years. For the past 10 years she has been Director of the Commonwealth Government's Australian National Maritime Museum (ANMM) in Sydney. She has forged strong ties with international organisations, represented the Government at major events in Australia and overseas, chaired several international and local cultural committees and refereed funding programs and academic journals in the UK, Australia and elsewhere.

Mary-Louise has strong leadership and management experience and has overseen several significant building programs at ANMM's Darling Harbour site. Since leaving ANMM in 2012, she continues to apply her skills as an advisor to Government and community groups on cultural matters. Mary-Louise was appointed Member of the Order of Australia in January 2013.



# **FOUNDATION FOR NATIONAL PARKS & WILDLIFE**

(A Company Limited by Guarantee)

## **Financial Statements for the Financial Year Ended 31 December 2013**

### **Mission**

"The Foundation helps save and protect Australia's natural and cultural heritage".

We will to do this by:

- Growing protected areas with high conservation values,
- Helping the recovery of threatened species,
- Building knowledge and engaging the community as stakeholders in nature conservation,
- Delivering conservation and environmental education projects,
- Protecting culturally significant sites within our national parks.

### **Results**

In the financial year to December 2013, the deficit of the Company was \$102,537 (2012 \$100,098). Accumulated funds as at 31 December 2013 were \$2,224,271 (2012 \$2,275,853). In 2013, total disbursements to government environmental agencies including the NSW Office of Environment and Heritage and conservation bodies and support of public awareness programs amounted to \$3,804,376 (2012 \$922,347).

Due to the different funding arrangements entered into by the company, disbursement of funds for projects of \$506,043 is made through the statement of profit or loss and other comprehensive income and, for certain funds received, directly against the liability (balance of unexpended grants) as disclosed in Note 7 amounting to \$3,298,333. The total of these disbursements amounting to \$3,804,376 fully reflects the project expenditure of the company.

### **FNPW Gift Fund Trust – Trustee Obligations**

The Foundation acts as Trustee for the FNPW Gift Fund Trust in accordance with the Trust Deed dated 2 February 2000. As at 31 December 2013 there was \$80,280 held in trust with corresponding right of indemnity to the Foundation for National Parks & Wildlife.

The Trust is administered by a management committee comprised of three Foundation Directors approved by the Commonwealth Department of Sustainability, Environment, Water, Population and Communities. During the year, the Trust accepted a donation of land valued at \$80,000 which has been gifted to the NSW Parks & Wildlife Group for permanent protection in Blue Mountains National Park. A statement of comprehensive income for the year ended 31 December 2013 and the financial position of the Trust as at that date appear in note 16 of the accounts.

### **Dividends**

In accordance with its Constitution, the Foundation is precluded from paying a dividend. Accordingly no dividends have been declared or paid. The Foundation surplus is disbursed to government environmental agencies including the NSW Office of Environment and Heritage and other conservation bodies for conservation projects and environmental education, sponsored programs or to support public awareness programs.

### **Principal Activities**

The principal activities of the Foundation contribute to realising the organisation's objects to conserve Australia's natural and cultural heritage and include fundraising, grant-making, awareness-raising and administration. The following is a summary of activities undertaken in 2013.



# FOUNDATION FOR NATIONAL PARKS & WILDLIFE

(A Company Limited by Guarantee)

## Financial Statements for the Financial Year Ended 31 December 2013

### Fundraising & Administration

The Directors approve and monitor the Foundation Business Plan for 2013, which set out its priority activities and budget for the year. \$884,162 was raised in public donations, land donations and bequests.

The cost of fundraising expressed as a percentage of gross income including grants received for disbursement for the entity was 10% (2012: 2%). The 2012 reduced ratio occurred due to the timing of the large grants received in that year. Grants of \$50,000 to assist with administration expenses were received from the New South Wales Office of Environment and Heritage.

### Grant-making

Over 140 grants totalling more than \$1,000,000 were paid for on-ground projects for threatened species recovery, habitat restoration, cultural heritage conservation, environmental education and visitor facilities. Funds were committed to 54 projects as part of the Private Land Conservation Grants program and to eight projects as part of the Great Eastern Ranges Grants program.

### Land Acquisition and Donations to the National Estate

Around 80 hectares of bush land at the Blue Mountains, valued at \$80,000 was donated to the Foundation by a private donor and will be gifted to the NSW Office of Environment and Heritage to become permanently protected as part of Blue Mountains National Park. This has been disclosed in the Gift Fund.

### Community Education, Involvement & Awareness-raising

The Backyard Buddies urban biodiversity education program has more than 24,000 subscribers. The trading agreement with Premium Fulfilment Services provided funding to support the running costs of the program through telemarketing of Backyard Buddy merchandise and direct donations.

368 pieces of positive media delivering conservation messages to the public appeared in media outlets including print, radio and online at national, state and regional level with no advertising costs.

### Members Guarantee

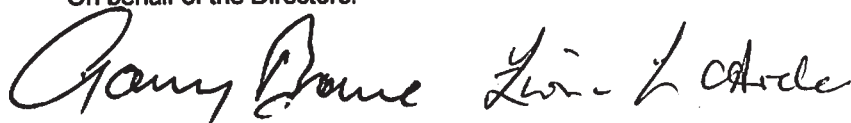
The Company is limited by guarantee. If the Company is wound up, the articles of association state that each member is required to contribute a maximum of \$20 each towards meeting any outstanding obligations of the Company. At 31 December 2013, the number of members was 111.

### Auditor's independence Declaration

A copy of the auditor's independence declaration as required under section 307C of the Corporations Act 2001 is set out on page 6.

Signed in accordance with a resolution of the Board made pursuant to Section 298(2) of the Corporations Law.

On behalf of the Directors.



Garry Browne  
President

Fiona Archer  
Treasurer

Date: 3/4/14



Grant Thornton Audit Pty Ltd  
ACN 130 913 594

Level 17, 383 Kent Street  
Sydney NSW 2000

Correspondence to:  
Locked Bag Q800  
QVB Post Office  
Sydney NSW 1230

T +61 2 8297 2400  
F +61 2 9299 4445  
E [info.nsw@au.gt.com](mailto:info.nsw@au.gt.com)  
W [www.grantthornton.com.au](http://www.grantthornton.com.au)

**Auditor's Independence Declaration**  
**To the Directors of the Foundation for National Parks & Wildlife**

In accordance with the requirements of section 307C of the Corporations Act 2001, as lead auditor for the audit of the Foundation for National Parks & Wildlife for the year ended 31 December 2013, I declare that, to the best of my knowledge and belief, there have been:

- a) no contraventions of the auditor independence requirements of the Corporations Act 2001 in relation to the audit; and
- b) no contraventions of any applicable code of professional conduct in relation to the audit.



GRANT THORNTON AUDIT PTY LTD  
Chartered Accountants



James Winter  
Partner - Audit & Assurance

Sydney, 3 April 2014

Grant Thornton Audit Pty Ltd ACN 130 913 594  
a subsidiary or related entity of Grant Thornton Australia Ltd ABN 41 127 556 389

'Grant Thornton' refers to the brand under which the Grant Thornton member firms provide assurance, tax and advisory services to their clients and/or refers to one or more member firms, as the context requires. Grant Thornton Australia Ltd is a member firm of Grant Thornton International Ltd (GTIL). GTIL and the member firms are not a worldwide partnership. GTIL and each member firm is a separate legal entity. Services are delivered by the member firms. GTIL does not provide services to clients. GTIL and its member firms are not agents of, and do not obligate one another and are not liable for one another's acts or omissions. In the Australian context only, the use of the term 'Grant Thornton' may refer to Grant Thornton Australia Limited ABN 41 127 556 389 and its Australian subsidiaries and related entities. GTIL is not an Australian related entity to Grant Thornton Australia Limited.

Liability limited by a scheme approved under Professional Standards Legislation. Liability is limited in those States where a current scheme applies.



# FOUNDATION FOR NATIONAL PARKS & WILDLIFE

(A Company Limited by Guarantee)

## Financial Statements for the Financial Year Ended 31 December 2013

### Statement of Profit or Loss and Other Comprehensive Income for the year ended 31 December 2013

	Note	2013 \$	2012 \$
<b>Gross Fundraising Income</b>			
Public Donations	802,162	617,589	
Bequests	2,000	167,846	
Sponsorship	31,913	45,966	
Investment Income on proceeds of above fundraising activities	55,988	98,142	
<b>Total Gross Fundraising Income</b>	<b>892,063</b>	<b>929,543</b>	
Total Costs of Fundraising	(162,936)	(146,838)	
<b>Net Fundraising Surplus</b>	<b>729,127</b>	<b>782,705</b>	
<b>Other Income</b>	<b>85,406</b>	<b>151,416</b>	
Employment expenses	(220,218)	(210,851)	
Insurance costs	(9,744)	(7,297)	
Marketing and Promotion expenses	(38,062)	(77,716)	
Rent	(30,702)	(26,617)	
Other Expenses	(112,301)	(70,061)	
Disbursements	(506,043)	(641,678)	
<b>Total Expenditure</b>	<b>(917,070)</b>	<b>(1,034,219)</b>	
<b>Operating Surplus/(Deficit)</b>	<b>(102,537)</b>	<b>(100,098)</b>	
Other Comprehensive Income for the year	50,955	10,704	
<b>Total Comprehensive Income/(deficit) for the year</b>	<b>(51,582)</b>	<b>(89,394)</b>	

The above Statement of Profit or Loss and Other Comprehensive Income for the year should be read in conjunction with the accompanying notes.



# FOUNDATION FOR NATIONAL PARKS & WILDLIFE

(A Company Limited by Guarantee)

## Financial Statements for the Financial Year Ended 31 December 2013

### Statement of Financial Position as at 31 December 2013

	Note	2013 \$	2012 \$
<b>Current Assets</b>			
Cash and Cash Equivalents	2	5,212,623	8,126,328
Accounts Receivable		66,529	-
<b>Total Current Assets</b>		<u>5,279,152</u>	<u>8,126,328</u>
<b>Non-Current Assets</b>			
Land		-	5,000
Plant & Equipment	3	16,646	17,690
Financial Assets	4	579,294	516,673
<b>Total Non-Current Assets</b>		<u>595,940</u>	<u>539,363</u>
<b>Total Assets</b>		<u>5,875,092</u>	<u>8,665,691</u>
<b>Current Liabilities</b>			
Accounts Payable	5	17,571	43,571
Provisions	6(a)	13,921	17,411
Unexpended Grants	7	3,613,215	6,328,856
<b>Total Current Liabilities</b>		<u>3,644,707</u>	<u>6,389,838</u>
<b>Non-Current Liabilities</b>			
Provisions	6(b)	6,114	-
<b>Total Non-Current Liabilities</b>		<u>6,114</u>	<u>-</u>
<b>Total Liabilities</b>		<u>3,650,821</u>	<u>6,389,838</u>
<b>Net Assets</b>		<u>2,224,271</u>	<u>2,275,853</u>
<b>Funds</b>			
<b>Funds at end of the year</b>			
Available for sale reserve		61,659	10,704
Accumulated Surplus		2,162,612	2,265,149
<b>Total Funds at year end</b>		<u>2,224,271</u>	<u>2,275,853</u>

The above Statement of Financial Position should be read in conjunction with the accompanying notes.



**FOUNDATION FOR NATIONAL PARKS & WILDLIFE**  
(A Company Limited by Guarantee)  
**Financial Statements for the Financial Year Ended 31 December 2013**

**Statement of Cash Flows for the year ended 31 December 2013**

	Note	2013	2012
		\$	\$
<b>Cash Flows from Operating Activities:</b>			
Receipts from contributions, donations and fundraising activities		859,441	842,947
Payments to suppliers and employees		(1,175,763)	(1,167,358)
Proceeds from grants		658,203	6,755,025
Disbursements for grants		(3,298,333)	(280,669)
Interest received		55,988	98,142
<b>Net cash provided by/(used in) operating activities</b>	<b>11</b>	<u>(2,900,464)</u>	<u>6,248,087</u>
<b>Cash Flows from Investing Activities:</b>			
Payments for investment securities		(161,114)	(552,853)
Proceeds from sale of investment securities		149,448	31,457
Purchases of plant and equipment		(1,575)	(10,852)
<b>Net cash (used in) investing activities</b>		<u>(13,241)</u>	<u>(523,232)</u>
<b>Cash Flows from Financing Activities</b>		-	-
<b>Net cash provided by/(used in) financing activities</b>		<u>-</u>	<u>-</u>
<b>Net increase/(decrease) in cash held</b>		(2,913,705)	5,724,855
<b>Cash at the beginning of the financial year</b>		8,126,328	2,401,473
<b>Cash at the end of the financial year</b>	<b>2</b>	<u>5,212,623</u>	<u>8,126,328</u>

The above Statement of Cash Flows should be read in conjunction with the accompanying notes.



# FOUNDATION FOR NATIONAL PARKS & WILDLIFE

(A Company Limited by Guarantee)

## Financial Statements for the Financial Year Ended 31 December 2013

### Statement of Changes in Accumulated Funds for the year ended 31 December 2013

	Available for Sale Reserve	Accumulated Surplus	Total Funds
Balance at 1 January 2012	-	2,365,247	2,365,247
Net surplus/(deficit)	-	(100,098)	(100,098)
Other comprehensive income	10,704	-	10,704
Total comprehensive income for the year	10,704	-	10,704
Balance at 31 December 2012	10,704	2,265,149	2,275,853
Balance at 1 January 2013	10,704	2,265,149	2,275,853
Net surplus/(deficit)	-	(102,537)	(102,537)
Other comprehensive income	50,955	-	50,955
Total comprehensive income for the year	50,955	-	50,955
Balance at 31 December 2013	61,659	2,162,612	2,224,271

The above Statement of Changes in Equity should be read in conjunction with the accompanying notes.



# FOUNDATION FOR NATIONAL PARKS & WILDLIFE

(A Company Limited by Guarantee)

## Financial Statements for the Financial Year Ended 31 December 2013

### 1 Summary of significant accounting policies

The principal accounting policies adopted in the preparation of the financial report are set out below. These policies have been consistently applied to all the years presented, unless otherwise stated.

#### (a) Basis of Preparation

These general purpose financial statements have been prepared in accordance with the requirements of the Corporations Act 2001, Australian Accounting Standards – Reduced Disclosure Requirements, Accounting Interpretations and other authoritative pronouncements of the Australian Accounting Standards Board.

##### *Historical cost convention*

These financial statements have been prepared on a going concern basis and under the historical cost convention.

##### *Significant accounting judgements, estimates and assumptions*

The preparation of financial statements requires management to make judgements, estimates and assumptions that affect the application of policies and reported amounts of assets, liabilities, income and expenses. The estimates and associated assumptions are based on historical experience and other factors that are believed to be reasonable under the circumstances, the results of which form the basis of making the judgements.

Actual results may differ from these estimates. The estimates and underlying assumptions are reviewed on an on-going basis. Revisions to accounting estimates are recognised in the period in which the estimate is revised if the revision affects only that period or in the period of the revision and future periods if the revision affects both current and future periods.

#### (b) Revenue recognition

Revenue is measured at the fair value of the consideration received or receivable.

Revenue is recognised for the major activities as follows:

##### *(i) Investment income*

Investment income comprises interest and dividends. Interest income is recognised as it accrues, using the effective interest method. Dividends from listed entities are recognised when the right to receive a dividend has been established.

##### *(ii) Donations*

Donations collected are recognised as revenue when the company gains control, economic benefits are probable and the amount of the donation can be measured reliably.

##### *(iii) Government funding*

The company is supported by grants received from governments. Grants received on the condition that specified services are delivered, or conditions are fulfilled, are considered reciprocal. Such grants are initially recognised as a liability and revenue is recognised as services are performed or conditions fulfilled. Revenue from non-reciprocal grants is recognised when the company obtains control of the funds. Funding received and administered under contract or grant agreement for disbursement to third parties under an agency arrangement are not brought to account as income and are accounted for as a liability until such funds are disbursed in accordance with the agreement.



# FOUNDATION FOR NATIONAL PARKS & WILDLIFE

(A Company Limited by Guarantee)

## Financial Statements for the Financial Year Ended 31 December 2013

### *(iv) In kind goods and services*

Goods or services received in kind are not brought to account unless the fair value of the contribution is reliably measurable.

### *(v) Committee fundraising activities*

Proceeds from the fundraising activities of the Committees, which are controlled by the Foundation, are brought to account on an accruals basis.

### *(vi) Bequests*

The Foundation has been nominated as a beneficiary for a number of estates throughout the period. Revenue is recognised when bequests are received by the Foundation.

## **(c) Goods and Services Tax (GST)**

Revenue, expenses and assets are recognised net of the amount of goods and services tax (GST), except where the amount of GST incurred is not recoverable from the Australian Taxation Office (ATO). In these circumstances the GST is recognised as part of the acquisition cost of the assets or of an item of expenses.

Receivables and payables are stated with the amount of GST included. The net amount of GST recoverable from, or payable to, the ATO is included as a current asset or liability in the balance sheet.

Cash flows are included in the cash flow statement on a gross basis. The GST component of cash flows arising from investing and financing activities which are recoverable from, or payable to the ATO are classified as operating cash flows.

## **(d) Disbursements**

Disbursements are measured at cost.

Disbursements are recognised for the major activities as follows:

### *(i) Cash disbursements*

Cash disbursements are recognised as an expense in the statement of comprehensive income at the time of the payment.

### *(ii) Land disbursements*

Land disbursements are recognised when Ministerial consent is obtained.

## **(e) Cost of Fundraising**

Cost of fundraising, being expenses that are attributed to fundraising activities are measured at cost and recognised at the time of the payment.

## **(f) Income Tax**

The Foundation is exempt from paying income tax. The Foundation holds an endorsement as an income tax exempt charity under subdivision 50-B of the Income Tax Assessment Act 1997.

## **(g) Acquisition of Assets**

All assets acquired including property, plant and equipment are initially recorded at their cost of acquisition at the date of acquisition, being the fair value of the consideration provided plus incidental costs directly attributable to the acquisition.



# FOUNDATION FOR NATIONAL PARKS & WILDLIFE

(A Company Limited by Guarantee)

## Financial Statements for the Financial Year Ended 31 December 2013

### (h) Cash and cash equivalents

Cash assets are carried at face value of the amounts deposited. The carrying amount of cash assets approximates net fair value.

For cash flow statement presentation purposes, cash and cash equivalents includes cash on hand, deposits held at call with financial institutions and other short term highly liquid investments with original maturities of three months or less that are readily convertible to known amounts of cash and which are subject to an insignificant risk of changes in value.

### (i) Payables

Liabilities are recognised for amounts to be paid in the future for goods and services received. The carrying amount of accounts payable approximates net fair value.

### (j) Employee Entitlements

#### (i) *Wages and salaries, annual leave and sick leave*

Liabilities for employee benefits for wages, salaries and annual leave represent obligations resulting from employees' services provided up to the balance sheet date, calculated at undiscounted amounts based on current wage and salary rates including related on-costs.

#### (ii) *Superannuation*

Contributions are made to employee superannuation funds and are charged against income as they are made.

The carrying amount of provisions for employee entitlements approximates net fair value.

### (k) Property, plant and equipment

All property, plant and equipment are stated at historical cost less depreciation. Historical cost includes expenditure that is directly attributable to the acquisition of the items.

Subsequent costs are included in the asset's carrying amount or recognised as a separate asset, as appropriate, only when it is probable that future economic benefits associated with the item will flow to the Foundation and the cost of the item can be measured reliably. The carrying amount of the replaced part is derecognised. All other repairs and maintenance are charged to the statement of comprehensive income during the reporting period in which they are incurred.

Depreciation on non-current assets is calculated using the diminishing value method to allocate their cost or revalued amounts, net of their residual values, over their estimated useful lives, as follows:

Furniture, fittings and equipment – 5 years

The asset's residual values and useful lives are reviewed, and adjusted if appropriate, at each balance sheet date.

An asset's carrying amount is written down immediately to its recoverable amount if the asset's carrying amount is greater than its estimated recoverable amount.

Gains and losses on disposals are determined by comparing proceeds with carrying amount. These are included in the statement of comprehensive income.

Land is accounted for at cost, and is disbursed to the Gift Fund Trust to be donated to the NSW Office of Environment and Heritage upon Ministerial consent.

# FOUNDATION FOR NATIONAL PARKS & WILDLIFE

(A Company Limited by Guarantee)

## Financial Statements for the Financial Year Ended 31 December 2013

### (l) Available for sale assets

Available-for-sale assets are those financial assets that are designated as available-for-sale. When available-for-sale financial investments are recognised initially, they are measured at fair value. Any available-for-sale financial investments donated to the company are recognised at fair value at the date the company obtains control of the asset.

After initial recognition available-for sale financial investments are measured at fair value with gains or losses being recognised in other comprehensive income until the investment is derecognised or until the investment is determined to be impaired, being either a significant or prolonged decline in value below cost, at which time the cumulative gain or loss previously recognised in other comprehensive income is reclassified to the statement of profit or loss and other comprehensive income.

The fair value of investments that are actively traded in organised financial markets is determined by reference to quoted market bid prices at the close of business on the reporting date. For investments with no active market, fair value is determined using valuation techniques. Such techniques include using recent arm's length market transactions; reference to the current market value of another instrument that is substantially the same; discounted cash flow analysis; and option pricing models.

### (m) Comparative figures

Where necessary, certain items and balances in the financial statements have been amended to conform to current year presentation.

#### (i) Prior period adjustment

Grant funds received by the Foundation for the purposes of expending to third parties on specific arrangements are not deemed to be revenue under AASB 118. The Foundation acts as an intermediary or agent in such transactions and earns management fees for its services. These gross funds have been taken to the Statement of Financial Position and reflected in Note 7. This treatment has been reflected in the 2013 financial statements and amended in the comparative balances.

	Amounts disclosed in 2012 financial statements	Adjustment	2012 Comparative restated
Grant Income	6,638,900	(6,493,400)	145,500
Investment Income	214,267	(116,125)	98,142
Disbursements	(922,347)	280,669	(641,678)
Unexpended Grants (liability)	-	(6,328,856)	(6,328,856)
Accumulated Funds	8,604,709	(6,328,856)	2,275,853

Legal action that commenced in 2013 is delaying fulfilment of the Heritage Estates project. As a result, the treatment applied this year, and in the comparative, reflects the company's re-assessment, this year, of the underlying contractual arrangements where the company is acting as an intermediary or agent in certain funding agreements.

### (n) Critical Accounting Disclosures

The financial statements have been prepared on a stand-alone basis ignoring the effects of the Gift Fund Trust. The Foundation acts as trustee of the Gift Fund Trust, and presents accounts as disclosed in note 16 for the benefit of the members.



**FOUNDATION FOR NATIONAL PARKS & WILDLIFE**  
(A Company Limited by Guarantee)  
**Financial Statements for the Financial Year Ended 31 December 2013**

	2013	2012
	\$	\$
<b>2 Cash and Cash Equivalents</b>		
Cash includes cash on hand and in banks and in short term money market instruments, and monies held in trust.	<b>5,212,623</b>	8,126,328
Cash includes \$3,638,726 (2012: \$6,328,856) held by the Foundation for distribution to third parties or for a specific purpose under contractual arrangements. These funds are not available for general working capital requirements. Unexpended funding at year-end is disclosed in Note 7.		
<b>3 Property, Plant and Equipment</b>		
Land	-	5,000
Plant & Equipment	<b>161,411</b>	154,836
Accumulated Depreciation	<b>(144,765)</b>	(137,146)
Net Book Amount - Property, Plant and Equipment	<b>16,646</b>	22,690
<b>4 Financial Assets</b>		
Available-for-sale financial assets	4(a) <b>526,401</b>	411,433
Other investments	<b>52,893</b>	105,240
	<b>579,294</b>	516,673
(a) Available-for-sale financial assets comprise:		
- shares in listed corporations	<b>463,847</b>	361,433
- units in listed trusts	<b>62,554</b>	50,000
Total available-for-sale financial assets	<b>526,401</b>	411,433
<b>5 Accounts Payable</b>		
Creditors and Accrued Expenses	17,571	43,571

**FOUNDATION FOR NATIONAL PARKS & WILDLIFE**  
(A Company Limited by Guarantee)  
**Financial Statements for the Financial Year Ended 31 December 2013**

	2013	2012
	\$	\$
<b>6a Provisions – current</b>		
Employee Entitlements - Annual Leave	13,921	17,411

**6b Provisions – non-current**

Employee Entitlements - Annual Leave / Long Service Leave	6,114	-
---	-------	---

**7 Unexpended Grants**

	Heritage Estates	Private Land Grants	Greening Australia	Total
<b>2012</b>				
Opening Balance	-	-	-	-
Grants Received	5,493,400	1,000,000	-	6,493,400
Interest Received	98,786	17,339	-	116,125
Grants Expended	(67,789)	(212,880)	-	(280,669)
<b>Closing Balance</b>	<b>5,524,397</b>	<b>804,459</b>	<b>-</b>	<b>6,328,856</b>
<b>2013</b>				
Opening Balance	5,524,397	804,459	-	6,328,856
Grants Received	-	-	400,000	400,000
Interest Received	143,143	39,549	-	182,692
Grants Expended	(2,614,230)	(294,951)	(389,152)	(3,298,333)
<b>Closing Balance</b>	<b>3,053,310</b>	<b>549,057</b>	<b>10,848</b>	<b>3,613,215</b>



**FOUNDATION FOR NATIONAL PARKS & WILDLIFE**  
(A Company Limited by Guarantee)  
**Financial Statements for the Financial Year Ended 31 December 2013**

	2013	2012
	\$	\$

**8 Related Party Transactions**

The members of the Board of the Foundation during the reporting year were:

Ms F Archer	Mr M Bethwaite AM	Mr G Browne AM	Mr P Janssen
Ms M Murray	Mr D Pumphrey	Ms M Williams AM	Mr A M Robinson (resigned 20/11/13)
Mr P Henschman (resigned 13/5/13)			

The Foundation has an agreement with Leisure Solutions®, a business jointly owned by Mr Angus M Robinson, for use of the Foundation logo. The transactions with this company are on a commercial basis.

**9 Key Management Personnel Compensation**

Total compensation	140,000	120,000
--------------------	---------	---------

**10 Auditors Remuneration**

Services provided by the Foundation's auditor	7,500	20,000
---	-------	--------

PricewaterhouseCoopers provided the 2012 audit services on a pro bono basis and Grant Thornton provided the 2013 audit services at a discount rate in recognition of the Foundation's services to the community.

**11 Notes to the Statement of Cash Flows**

(a) Reconciliation of Cash instruments

For the purposes of the statement of cash flows, cash includes cash on hand, in banks and short term money market

Cash	5,212,623	8,216,328
------	-----------	-----------

(b) Reconciliation of operating surplus to net cash provided by operating activities.

Operating Surplus/(Deficit)	(102,537)	(100,098)
-----------------------------	-----------	-----------

Non Cash Items:

Depreciation	7,619	7,618
--------------	-------	-------

Non Fundraising Items:

Investment Income	-	-
-------------------	---	---

**FOUNDATION FOR NATIONAL PARKS & WILDLIFE**  
(A Company Limited by Guarantee)  
**Financial Statements for the Financial Year Ended 31 December 2013**

	2013	2012
	\$	\$
<b>11 Notes to the Statement of Cash Flows (continued)</b>		
(Increase)/Decrease in Receivables	(66,529)	5,630
Increase/(Decrease) in Payables	(26,000)	(4,766)
Increase/(Decrease) in Unexpended Grants	(2,715,641)	6,328,856
Increase/(Decrease) in Provisions	2,624	10,847
Net cash (used by)/provided by operating activities	(2,900,464)	6,248,087

(c) Cash flows arising from the investments are presented on a net basis in the statement of cash flows.

## 12 Member's Guarantee

The Company is limited by guarantee. If the Company is wound up, the articles of association state that each member is required to contribute a maximum of \$20 each towards meeting any outstanding obligations of the Company. At 31 December 2013, the number of members was 111.

## 13 Committed / Accumulated Funds

Total Committed Funds at year end	1,141,291	1,089,089
Total Uncommitted Funds at year end	1,082,980	1,186,764
Total Accumulated Funds at year end	2,224,271	2,275,853

Committed funds represent non-contractual donations for specific projects which are unexpended at year end.

## 14 Commitments

(a) Lease commitments

(i) Non-cancellable operating leases

The company had previously leased an office under a non-cancellable operating lease which expired in March 2013. The lease payments are currently made on a month to month basis.

Commitments for minimum lease payments in relation to non-cancellable operating leases are payable as follows:

Within one year	-	5,026
-----------------	---	-------



# FOUNDATION FOR NATIONAL PARKS & WILDLIFE

(A Company Limited by Guarantee)

## Financial Statements for the Financial Year Ended 31 December 2013

### 15 Information required by the Charitable Fundraising Act 1991 NSW and the Charitable Fundraising Regulations 2008 (NSW)

#### (a) Summary of funds received and applied for charitable purposes

The purpose of the Foundation is to raise funds net of expenses for special nature and cultural heritage projects managed by the NSW Office of Environment and Heritage or other similar bodies. This is achieved through a variety of activities including fundraising from the public and corporate sector, government grants and investments. The Foundation undertook fundraising appeals throughout the year and holds an authority to fundraise under the Charitable Fundraising Act 1991 (NSW).

#### (b) Details of aggregate fundraising income and expense from fundraising appeals

	2013	2012
	\$	\$
Gross Income from Fundraising	972,063	929,543
Total Cost of Fundraising	(162,936)	(146,838)
Net Surplus from Fundraising	809,127	787,705

#### (c) Accounting Principles and Methods adopted in Fundraising accounts

The fundraising financial statements have been prepared on an accrual basis and in accordance with Australian Accounting Standards as per Note 1.

The balance of fundraising funds unspent is held within the Foundation's accumulated funds. The funds from fundraising are applied as set out in this financial report.

# FOUNDATION FOR NATIONAL PARKS & WILDLIFE

(A Company Limited by Guarantee)

## Financial Statements for the Financial Year Ended 31 December 2013

16

Gift Fund Trust  
(ABN 42 651 974 301)

### Statement of Profit or Loss and Other Comprehensive Income For the year ended 31 December 2013

	Note	2013 \$	2012 \$
<b>Receipts</b>			
Land donation		80,000	63,246
Interest Income		-	6
<b>Total Receipts</b>		<u>80,000</u>	<u>63,252</u>
<b>Expenditure</b>			
Other Expenses		-	-
Disbursements		-	(94,685)
<b>Total Expenses</b>		<u>-</u>	<u>(94,685)</u>
<b>Net Annual (Deficit) / Surplus</b>		<b>80,000</b>	<b>(31,433)</b>
Other Comprehensive Income for the year		-	-
<b>Total Comprehensive (Loss) / Income for the year</b>		<u><b>80,000</b></u>	<u><b>(31,433)</b></u>

### Statement of Financial Position As at 31 December 2013

	Note	2013 \$	2012 \$
<b>Current Assets</b>			
Cash		280	280
<b>Total Current Assets</b>		<u>280</u>	<u>280</u>
<b>Non Current Assets</b>			
Freehold land		80,000	-
<b>Total Non Current Assets</b>		<u>80,000</u>	<u>-</u>
<b>Total Assets</b>		<u><b>80,280</b></u>	<u><b>280</b></u>
<b>Current Liabilities</b>			
GST Refundable		-	-
Total Current Liabilities		-	-
<b>Total Current Liabilities</b>		<u>-</u>	<u>-</u>
<b>Net Assets</b>		<u><b>80,280</b></u>	<u><b>280</b></u>
<b>Accumulated Funds</b>			
Land held by the trust		80,000	-
Settlement Amount		20	20
Accumulated Funds at end of the year		<u>260</u>	<u>260</u>
<b>Total Accumulated Funds</b>		<u><b>80,280</b></u>	<u><b>280</b></u>



# FOUNDATION FOR NATIONAL PARKS & WILDLIFE

(A Company Limited by Guarantee)

## Financial Statements for the Financial Year Ended 31 December 2013

### 17 Details of Disbursements Applied to Charitable Purposes

Grant Name	Disbursement (\$)
Heritage Estates	2,614,230
Private Land Conservation Grants Program	294,951
Great Eastern Ranges Grants	389,152
<b>Total Disbursements</b>	<b>3,298,333</b>

Project Name	Disbursement (\$)
Nunnock Swamp Interpretations	3,405
Backyard Buddies Education Program*	88,022
Threatened Flora Surveys Harbour South	23,303
Enhancing recovery of Black eared Miners at Calpernum Station	7,190
Private Conservation Land Monitoring & Support Program 1	1,123
Monitoring of the Little Penguin population at Manly	18,224
Ten Mile Hollow Bridge	5,348
Kiandra Historic Heritage Tourism project	18,900
Endangered stuttering frog	24,000
Goat Island Rescue	4,800
Little Penguin Story	5,000
Directional Signs for Old Great North Road	6,500
Corporate Volunteering Sydney Harbour	83,002
Recovery of Eastern Bristlebird	22,582
Malleefowl	5,000
Redland Koala Treeplanting	6,000
Koala Count Application	5,000
Caught on Camera	13,200
Is Port Macquarie a Koala genetic hotspot	15,220
Safeguarding Australia's Threatened Flora	14,970
The Waddy Tree connecting communities across ages and cultures	14,100
Green Parrot assisted breeding project	13,290
White Fronted Chats	12,323
Stress and disease in the decline of the endangered Woylies	7,000
Jenolan Caves: The Science	10,000
Land for Wildlife forum	5,000
Education in Nature	3,300
Monitoring Evaluating and Reporting on the Little Penguin WA	7,000
Ridge to River – restoring riparian habitat in Lane Cove River	12,000
Monitoring Little Penguin mortalities in Gulf St Vincent SA	13,341
Furneaux Islands Boxthorn Control, Friends of Bass Strait Islands	13,160
Koala Action Group Bushcare Plantings	10,582
Daintree Buy Back and Protect forever, Rainforest Rescue	14,000
Land Acquisition Fund	158
<b>Total Disbursements</b>	<b>506,043</b>

<b>Total Disbursements (including grants)</b>	<b>3,804,376</b>
---	------------------

\* The amount disbursed for the Backyard Buddies Education Program is comprised of payroll expenses and purchase of educational material required to conduct the program.

# FOUNDATION FOR NATIONAL PARKS & WILDLIFE

(A Company Limited by Guarantee)

## Financial Statements for the Financial Year Ended 31 December 2013

### Director's Declaration

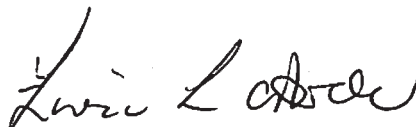
In the opinion of the Directors:

- a) The financial statements and notes set out on pages 8 to 22 are drawn up so as to give a true and fair view of the financial position of the Foundation for National Parks & Wildlife as at 31 December 2013 and its performance for the year ended on that date.
- b) At the date of this declaration, there are reasonable grounds to believe that the Foundation for National Parks & Wildlife will be able to pay its debts as and when they become due and payable.
- c) The financial statements and notes have been made out in compliance with Accounting Standards and in accordance with the Corporations Act 2001.
- d) The provisions and regulations of the Charitable Fundraising Act 1991 (NSW) and the Charitable Fundraising Regulations 2008 (NSW) have been complied with; and
- e) The internal controls are appropriate and effective in accounting for all income received and applied from fundraising appeals.

Signed in accordance with a resolution of the Board of Directors, for and on behalf of the Directors by



Garry Browne  
President



Fiona Archer  
Treasurer



Grant Thornton Audit Pty Ltd  
ACN 130 913 594

Level 17, 383 Kent Street  
Sydney NSW 2000

Correspondence to:  
Locked Bag Q800  
QVB Post Office  
Sydney NSW 1230

T +61 2 8297 2400  
F +61 2 9299 4445  
E [info.nsw@au.gt.com](mailto:info.nsw@au.gt.com)  
W [www.grantthornton.com.au](http://www.grantthornton.com.au)

### **Independent Auditor's Report To the Members of the Foundation for National Parks & Wildlife**

We have audited the accompanying financial report of the Foundation for National Parks & Wildlife (the "Foundation"), which comprises the statement of financial position as at 31 December 2013, the statement of profit or loss and other comprehensive income, statement of changes in equity and statement of cash flows for the year then ended, notes comprising a summary of significant accounting policies and other explanatory information and the directors' declaration of the company.

#### **Directors' responsibility for the financial report**

The Directors of the Company are responsible for the preparation of the financial report that gives a true and fair view in accordance with Australian Accounting Standards - Reduced Disclosure Requirements and the Corporations Act 2001, and the NSW Charitable Fundraising Act 1991 and the NSW Charitable Fundraising Regulation 2008. The Directors' responsibility also includes such internal control as the Directors determine is necessary to enable the preparation of the financial report that gives a true and fair view and is free from material misstatement, whether due to fraud or error.

#### **Auditor's responsibility**

Our responsibility is to express an opinion on the financial report based on our audit. We conducted our audit in accordance with Australian Auditing Standards. Those standards require us to comply with relevant ethical requirements relating to audit engagements and plan and perform the audit to obtain reasonable assurance whether the financial report is free from material misstatement.

An audit involves performing procedures to obtain audit evidence about the amounts and disclosures in the financial report. The procedures selected depend on the auditor's judgement, including the assessment of the risks of material misstatement of the financial report, whether due to fraud or error.

Grant Thornton Audit Pty Ltd ACN 130 913 594  
a subsidiary or related entity of Grant Thornton Australia Ltd ABN 41 127 556 389

'Grant Thornton' refers to the brand under which the Grant Thornton member firms provide assurance, tax and advisory services to their clients and/or refers to one or more member firms, as the context requires. Grant Thornton Australia Ltd is a member firm of Grant Thornton International Ltd (GTIL). GTIL and the member firms are not a worldwide partnership. GTIL and each member firm is a separate legal entity. Services are delivered by the member firms. GTIL does not provide services to clients. GTIL and its member firms are not agents of, and do not obligate one another and are not liable for one another's acts or omissions. In the Australian context only, the use of the term 'Grant Thornton' may refer to Grant Thornton Australia Limited ABN 41 127 556 389 and its Australian subsidiaries and related entities. GTIL is not an Australian related entity to Grant Thornton Australia Limited.

Liability limited by a scheme approved under Professional Standards Legislation. Liability is limited in those States where a current scheme applies.

In making those risk assessments, the auditor considers internal control relevant to the Company's preparation of the financial report that gives a true and fair view in order to design audit procedures that are appropriate in the circumstances, but not for the purpose of expressing an opinion on the effectiveness of the Company's internal control. An audit also includes evaluating the appropriateness of accounting policies used and the reasonableness of accounting estimates made by the Directors, as well as evaluating the overall presentation of the financial report.

We believe that the audit evidence we have obtained is sufficient and appropriate to provide a basis for our audit opinion.

### **Independence**

In conducting our audit, we have complied with the independence requirements of the Corporations Act 2001.

### **Auditor's opinion**

In our opinion:

- a) the financial report of the Foundation for National Parks & Wildlife is in accordance with the Corporations Act 2001, including:
  - i. giving a true and fair view of the company's financial position as at 31 December 2013 and of its performance for the year ended on that date;
  - ii. complying with Australian Accounting Standards- Reduced Disclosure Requirements and the Corporations Regulations 2001;
- b) the financial report agrees to the underlying records of the Foundation for National Parks & Wildlife, that have been maintained, in all material aspects, in accordance with the Charitable Fundraising Act 1991 and its regulations, for the year ended 31 December 2013; and
- c) monies received by the Foundation for National Parks & Wildlife, as a result of fundraising appeals conducted during the year ended 31 December 2013, have been accounted for and applied, in all material aspects, in accordance with the Charitable Fundraising Act 1991 and its regulations.



GRANT THORNTON AUDIT PTY LTD  
Chartered Accountants



James Winter  
Partner - Audit & Assurance  
Sydney, 3 April 2014